

# **True Fitness Service Manual**

# **Treadmills**

## **Models 350-750**

**True fitness technology, Inc. makes no representations or warranties regarding the contents of this manual. We reserve the right to revise this document at any time or to make changes to the product described within it without notice or obligation to notify any person of such revisions or changes.**

**© 2004, True Fitness, Inc. All rights reserved. Printed in the United States of America.**

**865 Hoff Road. O'Fallon, MO 63366. 1-800-426-6570. Fax 636-272-3026.**

**[www.truefitness.com](http://www.truefitness.com)**

**Revision 9/2004**

# Treadmill Preventative Maintenance Checklist

- ❖ Run calibration or run a manual program and watch and listen for anything out of the ordinary.
- ❖ Perform a push off test (page T-7) to check for proper lubrication. If excessive friction is found and lubrication doesn't correct the problem perform the amp draw test (page T1-2)
- ❖ Inspect the belt surfaces, topside should still have texture for grip, bottom should be porous fabric-not glazed, smooth or hard.
- ❖ Inspect deck surface, should be free of scratches, abrasions or blistering.
- ❖ Listen for excessive bearing noise, from a standing position, in the front and rear roller and motor.
- ❖ Check for front roller/belt slippage and belt tension adjustment. Look for slippage on drive pulley.
- ❖ Inspect/ adjust tracking of belt.
- ❖ Vacuum out motor area, being careful not to damage PWM.
- ❖ Inspect drive belt for wear and cracking.
- ❖ Wipe down machine- leave it in better condition than you found it.

# **True Fitness Treadmill Service Manual**

# **START**

- ❖ **Symptom guide**
- ❖ **Calibration Procedures**
- ❖ **Diagnostic Procedures**
- ❖ **Test Procedures**
- ❖ **Wiring Diagrams**
- ❖ **Part Manuals**

# **SYMPTOM GUIDE**

- **Error Code Definitions** ..... Page 3, 4
- **No Belt Movement** ..... Page 5, 6
- **Tread Belt Stops During Workout** ..... Page 7
- **Heart Rate Not Working / Erratic Readings** ..... Page 8
- **Elevation Not Functional** ..... Page 9
- **Speed Fluctuation: E2 Cal** ..... Page 10
- **Speed Fluctuation: S4, E5, E2  
E3: EPROM** ... Page 11
- **No Display** ..... Page 12
- **Circuit Breaker Trips at Start Up** ..... Page 13
- **Soft Select Malfunctions** ..... Page 14, 15
- **Calibration Procedures** ..... Page 16
- **Diagnostics** ..... Page 17

Symptom	Probable Cause	Corrective Action	Recommended Tools
<p><b>ERROR MESSAGES:</b></p> <p><b>S1 L LUBE</b></p> <p><b>S2 C CLEAN</b></p> <p><b>S3 M MOTOR</b></p> <p><b>E5 S SPEED SENSOR</b></p> <p><b>E1 S STALL</b></p> <p><b>E1 I INCLINE</b></p> <p><b>E1 R RANGE</b></p>	<p>Indicates that the accumulated distance is such that the deck needs to be lubed</p> <p>Indicates that the accumulated distance is such that the machine needs to be cleaned.</p> <p>Indicates that the accumulated time on the treadmill is such that the motor brushes need to be changed/checked.</p> <p>Cannot read speed sensor</p> <p>Incline reading not changing when commanded</p> <p>Incline reading has changed without the incline being commanded.</p> <p>Maximum or minimum elevation out of calibrated ranges</p>	<ul style="list-style-type: none"> <li>• Lube deck with True Fitness liquid silicone lubricant. Inspect wax bar assembly on commercial models, if worn to less than ¼ inch in thickness- replace wax bar.</li> <li>• Remove motor cover and vacuum dust from area. Wipe down the exposed area of the deck beside the straddle covers with a clean, dry cloth.</li> <li>• Check/Replace motor brushes as needed.</li> <li>• Reset timer.</li> <li>• Perform Speed Sensor Test page 21</li> <li>• See Elevation Not Functional page 9.</li> <li>• See Elevation Not Functional page 9.</li> <li>• See Elevation Not Functional page 9.</li> </ul>	<p>Liquid silicone single use pack Liquid Silicone Applicator. Vacuum Shop towel</p>


Symptom	Probable Cause	Corrective Action	Recommended Tools
<b>ERROR MESSAGES: (cont'd)</b>			Multi-meter Phillips head screwdriver
<b>E2 O OVERSPEED</b>	Belt speed ramping too fast.	Perform Amp Draw Test – Page 20. Perform Belt / Deck Wear Test – Page 24.	
<b>E2 C CALIBRATE</b>	Micro-controller cannot adjust belt speed to target.	Calibrate Treadmill – Page 16. See appropriate Symptom Guide – pages 10-11.	
<b>E3 E EEPROM</b>	Software error during treadmill startup diagnostics.	Restart Treadmill, if error persists- replace control panel.	
<b>E2 R RECALIBRATE</b>	Treadmill has lost calibration settings.	Recalibrate Treadmill – Page 16. (If unit loses programs- replace control panel)	

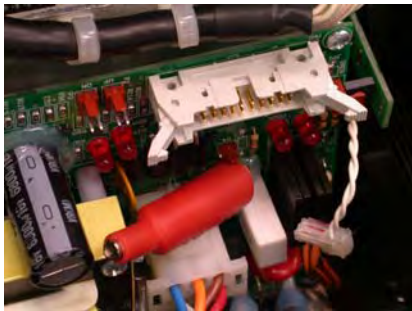






Symptom	Probable Cause	Corrective Action	Recommended Tools
<p><b>TREADBELT STOPS DURING WORKOUT</b>  Error Code displays:  Go to page 3 &amp; Page 4.</p>	<p><b>Loose safety key connection</b></p> <p><b>Belt movement issue</b></p> <p><b>Worn Deck / Belt</b></p> <p><b>Occurs when making changes to speed or elevation</b></p> <p><b>Overloaded house circuit</b></p> <p><b>Continuity, connection to motor</b></p> <p><b>Tread belt not centered or obstructed</b></p>	<ul style="list-style-type: none"> <li>• Check safety key to ensure that it is seating properly.</li> <li>• Check connection sensitivity.</li> </ul> <p>-----</p> <ul style="list-style-type: none"> <li>• If treadmill will not reset with cycling the power go to NO BELT MOVEMENT (<b>pages 5 &amp; 6</b>)</li> </ul> <p>-----</p> <ul style="list-style-type: none"> <li>• Perform Belt / Deck Wear Test (<b>page 24</b>).</li> <li>• Perform Amp Draw Test (<b>page 20</b>).</li> <li>• Apply silicone.</li> <li>• Replace Deck and Belt.</li> </ul> <p>-----</p> <ul style="list-style-type: none"> <li>• May be related to electro static discharge. Contact Technical support for assistance.</li> </ul> <p>-----</p> <ul style="list-style-type: none"> <li>• Verify the treadmill is on a dedicated circuit with at least a 15 amp breaker</li> <li>• Have customer supply a dedicated circuit</li> </ul> <p>-----</p> <ul style="list-style-type: none"> <li>• Reconnect or replace motor wires or connectors</li> </ul> <p>-----</p> <ul style="list-style-type: none"> <li>• Tension tread belt (<b>page 22</b>)</li> <li>• Center tread belt</li> <li>• Remove obstruction</li> </ul>	<p><b>Liquid silicone single use pack</b>  Liquid silicone  Applicator  Multi-meter  Socket set</p> <div style="border: 1px solid black; padding: 5px; margin-top: 10px;"> <p><b>Note:</b>  All trouble shooting should be performed in calibration mode.  Page 16</p> </div>

Symptom	Probable Cause	Corrective Action	Recommended Tools
<p><b>HEART RATE NOT WORKING / ERRATIC READINGS</b></p>	<p><b>Incorrect power source</b></p>	<ul style="list-style-type: none"> <li>• Verify that the treadmill is connected to a dedicated line, 15-amp circuit, and not on an extension cord.</li> <li>• Move to proper outlet.</li> <li>• Test 110 VAC outlet for proper ground</li> </ul> <p>-----</p>	<p>Multi-meter Double sided tape Heart rate simulator</p>
	<p><b>Improper treadmill grounding</b></p>	<ul style="list-style-type: none"> <li>• Proper grounding is vitally important.</li> <li>• Ensure that the pedestal wire harness ground lead is secure</li> </ul> <p>-----</p>	
	<p><b>Improper heart rate receiver mount</b></p>	<ul style="list-style-type: none"> <li>• Ensure that the HR receiver is not touching metal and is mounted with the wires in a vertical position with the blue receiver facing the runner</li> </ul>  <p>-----</p>	<p><b>Note:</b> All trouble shooting should be performed in calibration mode. Page 16</p>
	<p><b>Defective Chest Strap</b></p>	<ul style="list-style-type: none"> <li>• Does the receiver pick up a signal from the HR simulator?</li> <li>• If yes, replace chest strap</li> </ul> <p>-----</p>	
	<p><b>Defective receiver</b></p>	<ul style="list-style-type: none"> <li>• Does the heart rate LED on the control panel blink? If not then replace the receiver.</li> </ul> <p>-----</p>	
	<p><b>Radio Frequency Interference</b></p>	<ul style="list-style-type: none"> <li>• Locate RF sources and use process of elimination. Common sources of RF interference are: Invisible fences for pets; wireless networks; cordless phones, Cell phones, radios, home security sensors, etc.</li> </ul>	

Symptom	Probable Cause	Corrective Action	Recommended Tools
<p><b>ELEVATION NOT FUNCTIONAL ( E1 ERROR)</b></p>	<p><b>Improper grounding / Calibration (May cause unit to drift up &amp; down without command)</b></p>	<ul style="list-style-type: none"> <li>• Test 110VAC outlet for proper grounding</li> <li>• If unit has not been calibrated – calibrate</li> <li>• Ensure that incline cables are secure on PWM</li> </ul> <p>-----</p>	<p>Multi-meter</p> <p>Alligator clip</p>
	<p><b>Unit is stuck at full incline</b></p>	<ul style="list-style-type: none"> <li>• Verify the lower limit switch is properly connected to the PWM</li> <li>• Remove the LLS wire from the PWM and short the two posts of the connector together with an alligator clip. Cycle the power. If the treadmill lowers itself then replace the lower limit switch.</li> <li>• Perform Incline potentiometer calibration procedure (<b>page 16</b>)</li> <li>• If incline nut is stripped- replace incline nut</li> </ul>	<div style="border: 1px solid black; padding: 5px;"> <p><b>Note:</b> All trouble shooting should be performed in calibration mode. Page 16</p> </div>
	<p><b>Defective Start Capacitor</b></p>	 <p>-----</p>	
<p><b>Defective PWM</b></p>	<ul style="list-style-type: none"> <li>• Do Up/Down command LED's light?</li> <li>• If No- skip to defective PWM section.</li> <li>• If yes- does motor hum with no movement?</li> <li>• If yes- check the leads to the capacitor for breaks, if no breaks- replace capacitor.</li> <li>• If No- replace PWM.</li> </ul> <p>-----</p> <ul style="list-style-type: none"> <li>• If no Up/Down LED's light check continuity on data cables.</li> <li>• If cables are good- replace Upper Panel.</li> <li>• If cables bad- Replace data cables.</li> </ul>		

Symptom	Probable Cause	Corrective Action	Recommended Tools
<p align="center"><b>SPEED FLUCTUATION E2: CAL</b></p>	<p><b>Speed Fluctuation (Due to high friction)</b></p>	<ul style="list-style-type: none"> <li>• Perform Push Off Test (<b>page 24</b>)</li> <li>• Perform Amp Draw Test (<b>page 20</b>)</li> </ul>	<p>Multi-meter</p> <p>Socket Set</p> <p>Silicone Lubrication Packet</p>
	<p><b>Speed Fluctuation (Due to Voltage fluctuation)</b></p>	<ul style="list-style-type: none"> <li>• Check Line voltage for fluctuations.</li> <li>• Have customer take corrective action.</li> </ul>	<p>Silicone Lubrication Applicator</p>
	<p><b>Bad Data Feedback</b></p>	<ul style="list-style-type: none"> <li>• Verify tach feedback accuracy through out the speed range.</li> <li>• If inaccurate perform speed sensor test (<b>page 21</b>)</li> </ul>	<div style="border: 1px solid black; padding: 5px;"> <p><b>Note: All trouble shooting should be performed in Calibration Mode: See SG-12</b></p> </div>
	<p><b>Incorrect Speed Sensor Gap</b></p>	<ul style="list-style-type: none"> <li>• Verify correct Speed sensor Gap.</li> <li>• Gap should be equal to the thickness of (3) credit cards pressed together (approximately 1/8 to 1/4 inch)</li> </ul>	

Symptom	Probable Cause	Corrective Action	Recommended Tools
<p><b>SPEED FLUCTUATION</b></p> <p><b>S4: Sensor</b>  <b>E5: Speed Sensor</b>  <b>E2: Overspeed</b>  <b>E3: EPROM Error</b></p>	<p><b>No Belt Movement</b></p> <p><b>No/Intermittent Tach Feedback</b></p> <p><b>Overspeed Error</b></p> <p><b>E3: EPROM Error</b>  <b>Software error during treadmill startup</b></p>	<ul style="list-style-type: none"> <li>• Go to page 5, 6.</li> </ul> <p style="text-align: center;">-----</p> <ul style="list-style-type: none"> <li>• Enter Calibration mode (<b>page 16</b>)</li> <li>• Verify speed feedback in speed display through out the speed range. [Speed display should never show 0 mph when belt is moving]</li> <li>• If no tach feedback is available perform speed sensor test (<b>page 21</b>).</li> <li>• Check continuity of tach feedback portion of the data cable (To identify tach feed back lines see wiring diagram section for specific model).</li> </ul> <p style="text-align: center;">-----</p> <ul style="list-style-type: none"> <li>• Check/Adjust tread belt tension (<b>page 22</b>)</li> <li>• Perform speed sensor test (<b>page 21</b>) If speed sensor fails adjust gap, if still fails-replace speed sensor.</li> <li>• Perform belt / deck wear test (<b>page 24</b>) If badly worn, replace belt and deck.</li> <li>• Replace PWM</li> </ul> <p style="text-align: center;">-----</p> <ul style="list-style-type: none"> <li>• Restart unit- if error persists, replace control panel.</li> </ul>	<p>Multi-meter</p> <p>Socket Set</p> <p>Silicone Lubrication Packet</p> <p>Silicone Lubrication Applicator</p> <div style="border: 1px solid black; padding: 5px; margin-top: 20px;"> <p><b>Note:</b>  All trouble shooting should be performed in calibration mode.  Page 16</p> </div>

Symptom	Probable Cause	Corrective Action	Recommended Tools
<b>NO DISPLAY</b>	<b>No power at the 110 VAC outlet.</b>	<ul style="list-style-type: none"> <li>• Check home circuit breaker. Reset as necessary.</li> <li>• Test for 110 VAC at outlet.</li> <li>• Identify if outlet is a GFI.</li> </ul> <div style="border: 1px solid black; padding: 5px; margin: 10px 0;"> <p><b>Note:</b> Some brands of GFI outlets are too sensitive for treadmill use. Call the help line if encountering GFI issues.</p> </div> <p style="text-align: center;">-----</p>	<p>Allen Key set.</p> <p>Phillips head screwdriver.</p> <p>Multi-meter.</p> <div style="border: 1px solid black; padding: 10px; margin: 10px 0;"> <p><b>Note:</b> All trouble shooting should be performed in calibration mode. Page 16</p> </div>
	<b>No power to the treadmill.</b>	<ul style="list-style-type: none"> <li>• Check for AC light on PWM. (See diagram pages 23-30)</li> <li>• Check for 110 VAC at power cord. Replace if no power.</li> <li>• If Yes- Check for 110 VAC at tread power switch. Replace if no power.</li> <li>• If Yes-Check for 110 VAC at tread circuit breaker. Replace/ reset if necessary.</li> <li>• If Yes- Check for 110 VAC at PWM across AC1 &amp; AC2.</li> <li>• If Yes- Replace PWM.</li> </ul> <p style="text-align: center;">-----</p>	
	<b>No power to the control panel.</b>	<ul style="list-style-type: none"> <li>• Check status LED +11 VDC on PWM (See diagram pages 23-30). If not remove fuses and check continuity as replace as needed.</li> <li>• If Yes- Check wire harness connections at PWM and Control Panel. Reconnect as needed.</li> <li>• If Yes- Check voltage on harness at panel. Refer to wiring diagram for your machine type in wiring diagram section. If voltage is present– replace panel and recalibrate (page 16). If voltage is not present check voltage at PWM. If voltage is present at PWM replace pedestal wire harness. If 0_VDC replace PWM and recalibrate (page 16).</li> </ul>	

Symptom	Probable Cause	Corrective Action	Recommended Tools
<p style="text-align: center;"><b>CIRCUIT BREAKER TRIPS</b></p>	<p>Possible short in treadmill wiring.</p>	<ul style="list-style-type: none"> <li>• Power off the treadmill and inspect all wiring for shorts or burned areas.</li> <li>• Secure all connectors.</li> </ul> <p style="text-align: center;">-----</p>	<p>Allen Key set</p> <p>Needle nose pliers</p> <p>Socket set</p> <p>Multi-meter</p>
	<p>Motor issues.</p>	<ul style="list-style-type: none"> <li>• Disconnect motor leads from the PWM. Power on treadmill, press start. If the breaker does not trip check the motor brushes and perform the motor test procedure (<b>page 22</b>).</li> <li>• Reconnect motor to the PWM, if the breaker trips- replace the motor.</li> </ul> <p style="text-align: center;">-----</p>	
	<p>Incline motor drawing treadmill down</p>	<ul style="list-style-type: none"> <li>• Unplug incline motor.</li> <li>• Power on treadmill, if breaker does not trip- replace incline motor.</li> </ul> <p style="text-align: center;">-----</p>	
	<p>Bad PWM</p>	<ul style="list-style-type: none"> <li>• Unplug PWM, power on machine. If breaker <u>doesn't</u> trip- replace PWM.</li> </ul> <p style="text-align: center;">-----</p>	
	<p>Too much tension on belt or obstruction under belt.</p>	<ul style="list-style-type: none"> <li>• Check for correct tension adjustment (<b>page 22</b>)</li> <li>• Check for obstruction- remove obstruction.</li> </ul> <p style="text-align: center;">-----</p>	
	<p>Weakened circuit breaker or High belt/deck friction</p>	<ul style="list-style-type: none"> <li>• Perform AC Amp Draw Test (<b>page 20</b>) at circuit breaker.</li> <li>• If draw is less than 15 amps continuously - replace breaker.</li> <li>• Perform Amp Draw test (<b>page 20</b>) If Amp draw is higher than recommended try push test (<b>page 24</b>) procedure.</li> </ul>	

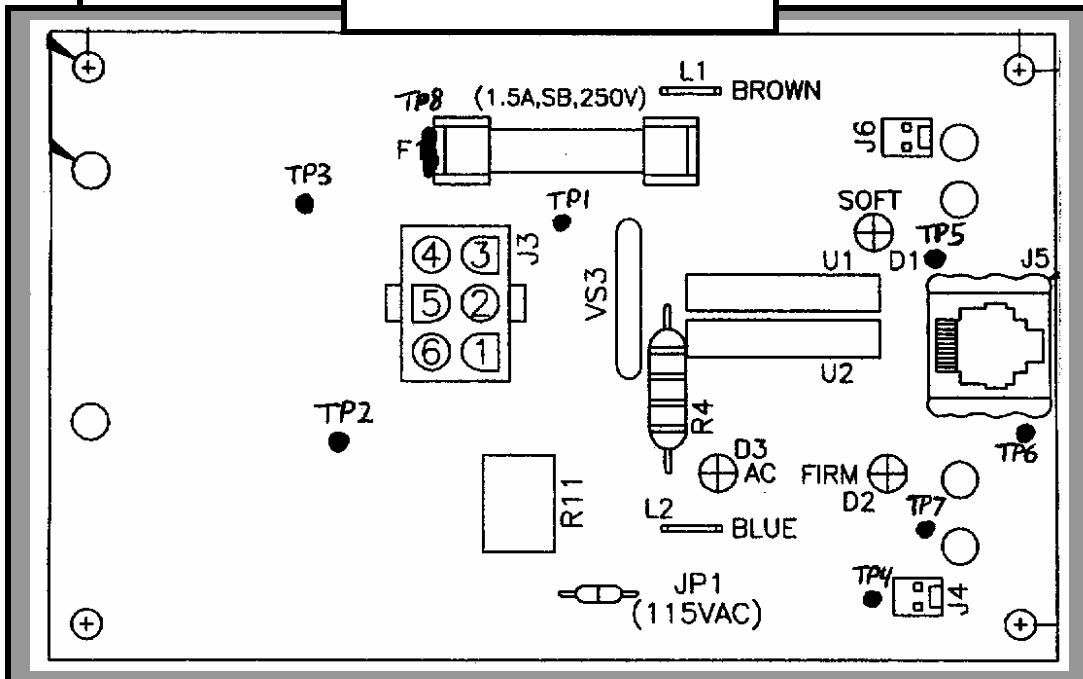
**Note:**  
All trouble shooting should be performed in calibration mode.  
Page 16

Symptom	Probable Cause	Corrective Action
<p><b>Soft Select Malfunctions</b></p>	<p><b>Control Panel Issues</b></p>	<ul style="list-style-type: none"> <li>• Enter calibration mode</li> <li>• Is there a count value displayed in the distance window? If No replace control panel. If yes- continue to next step.</li> </ul> <p>-----</p>
	<p><b>Mechanical Issues</b></p>	<ul style="list-style-type: none"> <li>• Press and hold the softer button, release. Press and hold the firmer button to detect carriage movement in both directions. If the carriage cannot go full range from -220 and consistently stops in the same place, check for mechanical binding. Inspect the under pan for damage or areas that cause mechanical binding. Also inspect the carriage track in the side frame for binding. If the carriage cannot move to its full range and back in the time limit, check for mechanical binding.</li> <li>• If the carriage <u>is not</u> moving and the motor is turning, check the set screws holding the drive shaft to the motor shaft.</li> </ul> <p>-----</p>
	<p><b>Incorrect/ Missing Count Values</b></p>	<ul style="list-style-type: none"> <li>• Threaded shaft turns when commanded but the pulse count does not display/ or does not change. Physically check the hex cam located at the front of the shaft and on the motor shaft. Hex cam should be firmly attached. If hex cam slides freely super gluing it back onto the shaft can repair it.</li> <li>• Hex cam moves but counter does not register. Ensure that the micro switch is properly adjusted and the switch is being made when the hex cam points press against the roller.</li> <li>• Disconnect the cable at J4 and check for continuity on cable. Cable should have continuity if the switch roller is in a flat area of hex cam. If no continuity- replace cable. If good continuity, place cable back on J4 and continue</li> <li>• While in calibration mode place the multi-meter leads on J4 and check for 5 Volts. If no 5 Volts- replace board.</li> </ul> <p>-----</p>
	<p><b>Defective Motor/ Start Capacitor</b></p>	<ul style="list-style-type: none"> <li>• If command and count data/voltage are present and Led 1 indicates AC voltage is good but soft select motor does not respond. Set probes on TP 8 and TP3, press soft command (with soft select limit switch not activated) result should be 120 VAC. Set probes on TP8 and TP2 and press firm command (with soft select limit switch not activated) result should be 120 VAC. If no 120 VAC on either test point- replace soft select board. If voltage is correct- continue to next step.</li> <li>• In calibration mode, place red lead on the larger red wire and post on the start capacitor of the soft select system and the black lead on the common black lead, press firm- the result should be 120 VDC. Next place the white lead on the larger white wire and post on the start capacitor of the soft select system and the black lead on the common black lead; press soft- the result should be 120 VDC. If voltage is correct- replace the motor. If voltage is incorrect- replace the start capacitor.</li> </ul>



Symptom	Probable Cause	Corrective Action
Soft Select Malfunctions (continued)	AC Power Issues	<ul style="list-style-type: none"> <li>Is AC power LED D3 lit?</li> <li>No- check F1 fuse. If F1 is good check for AC voltage between TP1 and TP5. If fuse and voltage are good- replace the board.</li> </ul> <p>-----</p>
	Wire Harness	<ul style="list-style-type: none"> <li>Yes- While in calibration mode Press the Softer button- LED D1 should light, press the Firmer button- LED D2 should light. If the lights respond to the button then command is being sent from the upper board and received at the soft select board. If lights do not respond check or replace 6-pin data cable, if cable is ok- replace upper panel.</li> </ul> <p>-----</p>

**SOFT SELECT BOARD ILLUSTRATION**



# Calibration Procedures

## SS 100 PWM (5-xxxxx to 6-79999 serial numbers)

Entering Engineering Mode:

With safety key in, power up unit while holding **Grade Up** and **Grade Down** keys.  
Incline will reset to zero.

Mode 1: Max Speed

Press **Select/Enter**- 01 (C1 for 450) appears in Distance.

Adjust speed using **Fast** and **Slow** buttons until 10 or 12 mph

Verify speed by counting belt revolutions: 10mph= 102 Belt revs/per min. 12mph= 121 Belt revs/per min.

Press **Start/Reset** to save max speed, wait for belt to stop.

Mode 2: Speed Table

Press **Select/Enter**-02 (C2 for 450) appears in Distance

Press **Start/Reset** to set speed table. Treadmill will speed up and slow down on its own. Wait for belt to stop.

Mode 3: Incline

Press **Select/Enter**- 03 (C3 for 450) appears in distance

Press **Grade Up** to upper incline limit, then back down slightly

Save upper limit by pressing **Start/Reset**

Turn treadmill off and then back on and check operation

## SS90 Calibration (6-8xxxx serial numbers and after)

Enter Calibration Mode by holding the **Up** and **Down** keys while inserting the safety key

In message center window displayed: Press Start to Calibrate

**NOTE:** In Calibration mode, it is possible to check if the speed sensor is reading all the front roller magnets: the Met light will light when a magnet is in front of the sensor. Speed must be less than 1 mph.

Press **Start/Reset** to begin calibration

Treadmill will elevate and speed up/slow down. Wait for belt to stop.

Message center window will display: Successful, or will indicate error area.

Remove and re-insert safety key. Check operation of treadmill.

## DIAGNOSTICS (Available only in SS90 Machines)

To enter diagnostic mode, press and hold the **FAST** and **SLOW** buttons while pushing in the safety key.

The control panel will show “Diagnostics”.

Press the **UP** button: Total Hours (in whole hours)

Press the **UP** button: Distance (in miles, two digits past decimal point)

Press the **UP** button: Average Speed (in mph)

Error List (This is an error log, but just a list of errors possible on the unit.)

S1: Lube

S2: Clean

S3: Motor

S4: Sensor

E1: Minimum

E2: Overspeed

E2: Cal

E3: EPROM

Remove Safety Key to exit Diagnostics



# TEST PROCEDURES

- Grounded Outlet Test Page 20
- Amp Draw Test Page 20
- Speed Sensor Test Page 21
- Voltage to Drive Motor Test Page 21
- Drive Motor Test Page 22
- Drive Belt Tension Test Page 22
- Tread belt Tension Test Page 22
- Incline Potentiometer Calibration Test Page 23
- Voltage to Incline Motor Test Page 23
- Belt / Deck Wear Test (Push Off Test) Page 24

# TEST PROCEDURES

## GROUNDING OUTLET TEST

This test is very important for optimal HRC and incline operation.

- Set voltmeter for Volts AC
- Place 1 lead in the right side of the outlet (hot)
- Place 1 lead in the ground plug
- A properly grounded outlet will read 110 VAC

## AMP DRAW TEST

This test is a good indicator of the wear condition of the belt and deck, and the need for lubrication. The treadmill circuit breaker will trip at 15 amps, so be sure the voltmeter you are using is rated for at least 15 amps when you are load testing the treadmill. This test can be performed either on one of the AC power cord leads or on one of the DC motor leads from the PWM to the motor. Testing the amp draw at certain speeds without load and with load will signal whether higher than normal amp draw is a result of PWM failure or increased friction from belt and deck wear.

## AC AMP DRAW PROCEDURE

This procedure requires an AC clamp-on ammeter. Place the clamp around either of the power cord leads, black or white. Load test requires a person to walk on the tread belt for 5-10 minutes.

2.5 mph w/out load	2.0-2.5 AMPS AC
2.5 mph with load	2.75-3.75 AMPS AC
5.0 mph w/out load	3.5-4.0 AMPS AC
5.0 mph with load	5.0-7.0 AMPS AC

## DC AMP DRAW PROCEDURE

This procedure can be performed with an ordinary voltmeter. **(Note: Be sure the voltmeter is rated to handle 15 DC amps.)** Disconnect the red motor lead from MTR1 on the PWM. Connect the voltmeter to MTR 1 on the PWM and the other voltmeter lead to the red motor lead so that the voltmeter completes the connection of the PWM to the motor.

2.5 mph w/out load	4.5-5.0 AMPS DC
2.5 mph with load	7.0-8.0 AMPS DC
5.0 mph w/out load	5.0-5.5 AMPS DC
5.0 mph with load	8.5-9.0 AMPS DC

Higher than normal amp draws without load may signal that belt tension is too tight or there is a problem in the Drive Motor or PWM. Perform the Drive Motor Test and visually check the motor brushes before replacing the PWM. Higher than normal amp draws with load after normal readings without load signal belt and deck friction which may require lubrication or replacement.

## TEST PROCEDURES

### **SPEED SENSOR TEST**

This test is used to verify sensor operation in conditions of speed fluctuation, E2: Cal error, S4: Sensor error, E2: Overspeed error or Unsuccessful Calibration.

#### **SS100** (Serial numbers 5-xxxx to 6-7999)

Set voltmeter to Volts DC. Treadmill power on speed and speed at 0mph

Attach voltmeter leads across outside 2 contacts at P2 on PWM

With magnet in front of sensor, 0 VDC

With no magnet in front of sensor, 3.0 VDC

#### **SS90** (Serial numbers 6-8000 and above)

Set voltmeter to volts DC. Treadmill power on and speed at 0 mph

Attach voltmeter leads across outside 2 contacts at J1 on PWM

With magnet in front of sensor, 0 VDC

With no magnet in front of sensor, 5 VDC

Check the sensor on every magnet, adjust sensor until voltage shows

In calibration mode before pressing Start, the tread belt can be moved manually and the Met light will blink when a magnet is in front of the sensor.

### **VOLTAGE TO DRIVE MOTOR TEST**

This test is used to diagnose conditions of NO Belt Movement, or Speed Fluctuations

Set voltmeter to volts DC and adjust speed on Control Panel to 4 mph

Attach red voltmeter lead to MTR1 on PWM with motor wires attached

Attach black voltmeter lead to MTR2 on PWM with motor wires attached

0 VDC signals no PWM output

166 VDC signals open circuit in motor or motor connection

Operating voltage will lay between 0 VDC and 166 VDC

**NOTE:** The reason that we do not narrow down PWM output voltage is that the PWM output is a pulse signal. The sampling rate of the voltmeter used will determine what output voltage the voltmeter is able to read.

## TEST PROCEDURES

### DRIVE MOTOR TEST

This test is used in conditions of No Belt Movement.

- Unplug treadmill and set voltmeter to volts DC
- Disconnect motor leads from PWM
- Place 1 voltmeter lead in each motor wire
- Gently spin the motor flywheel and check for voltage DC
- 2-5 VDC means normal motor operation
- 0 VDC means motor malfunction

### DRIVE BELT TENSION TEST

This test is used in front roller replacement and in conditions of belt slipping.

- Place two fingers on top of the drive belt halfway between the front roller pulley and the drive motor pulley.
- With moderate pressure push down on belt
- If belt deflects down more than 1/8 “, tighten motor mounts
- If belt deflects down less than 1/8 “, loosen motor mounts.
- It is also possible to twist the belt; you should be able to twist the belt almost to a vertical position

### TREADBELT TENSION TEST

This test will address belt slipping and is used in any roller replacement or deck replacement. Ensure that the drive belt is properly tensioned before adjusting tread belt tension. Belt and deck wear and/or lack of lubrication can cause the tread belt to show symptoms similar to loose tread belt tension- check these conditions before adjusting tread belt tension.

- Turn treadmill on and adjust speed to 2 mph
- Walk heavily on the belt pulling slightly against belt movement
- If hesitation or slip is detected, tighten tread belt tension bolts ¼ turn
- Repeat until no hesitation or slip is encountered. Check at higher speeds

Tread belt tension is too tight if the belt feels stiff to touch with no give or the belt groans against the rollers. You should be able to insert your hand between the belt and deck palm up almost to your thumb when the belt is at proper tension.



## TEST PROCEDURES

### INCLINE POTENTIOMETER CALIBRATION TEST

This test can correct E1: Minimum conditions and aid in diagnosis of incline problems with finding zero or target incline.

SS100 and SS90

Set voltmeter to Ohms ( $\Omega$ ) with treadmill unplugged from wall  
Place 1 voltmeter lead on pin 3 (Blue) and 1 lead on pin 2 (Orange)  
Check for 800 Ohms

SS90 Only: In calibration mode before pressing Start, the Distance window displays the incline number.

With the treadmill at zero, the number should be between 160 and 180. 0 often indicates a wire harness misconnection or failure of signal to panel.

As the unit inclines during calibration, watch the numbers in the Distance window, if they do not increase by at least 60 from the zero value, an E1: Minimum error will result. Then the zero value may need to be reset to a lower value.

If incline potentiometer needs adjustment, remove swivel opines and twist incline motor shaft by hand for SS100 or use Up and Down keys for SS90. (See diagram on T-6)

### VOLTAGE TO INCLINE MOTOR TEST

This test is utilized in conditions of No Incline Movement, Incline Fluctuation, or E1: Minimum.

Set voltmeter to AC volts. To access incline plug, PWM screws may need to be removed.  
Place voltmeter leads across White and Black while pushing UP button  
10 VAC indicates normal PWM output, 0 VAC signals no output  
Place voltmeter leads across Red and White while pushing Down button  
110 VAC indicates normal PWM output, 0 VAC signals no output

## TEST PROCEDURES

### **Belt / Deck Wear Test**

This is a simple physical test to gauge the general level of friction present between the deck and belt.

1. While the treadmill is not running, inspect the condition of the underside of the tread belt. The fabric should be soft and porous. If the belt appears glazed- replace the belt.
2. While the treadmill is not running, slide your hand under the belt and feel the surface of the deck. The deck should feel smooth with no abrasions or scratches. If any abrasions or scratches are found- replace the deck.

### **Push Off Test**

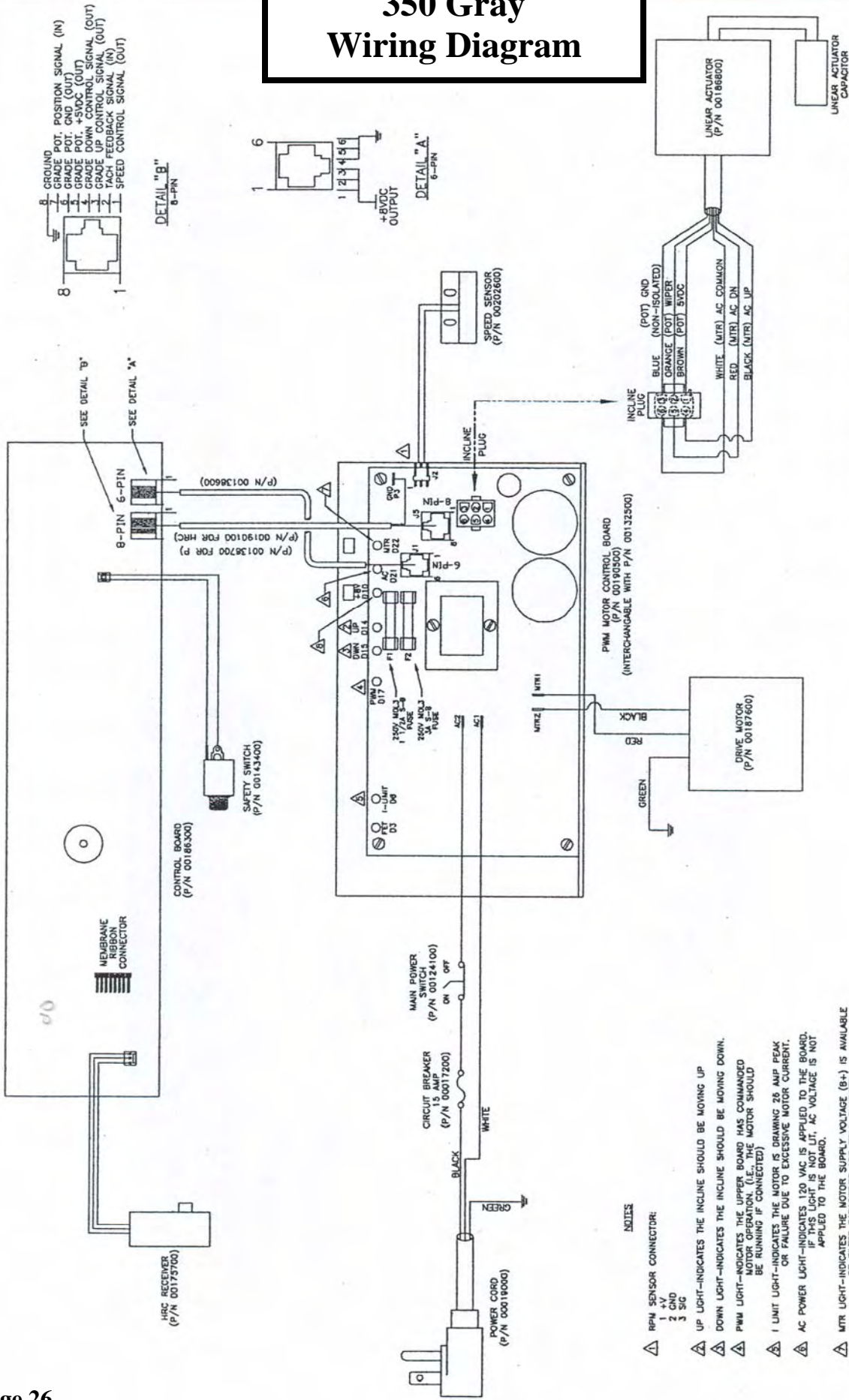
Place the machine in Calibration mode, elevate to the highest elevation- speed should be set to 0. Stand on the tread belt positioning yourself close to the console; push off with moderate force. The elevation combined with your weight and the force of the push should cause the belt to carry you all the way to the end of the machine\*. If the test does not carry you to the end of the machine lubricate the belt using True Fitness liquid silicone. After lubricating the belt/deck perform the push off test again. If it does not pass the test after lubricating replace the belt and deck

\* **Note:** Residential treadmills may only carry about  $\frac{3}{4}$  of the distance of the deck due to higher tension on the belt.

# **WIRING DIAGRAMS**

- **350 Gray** **Page 26**
- **350 Black** **Page 27**
- **400** **Page 28**
- **450/500/700** **Page 29**
- **500CI/750CI** **Page 30**
- **750 NON/P** **Page 31**
- **750** **Page 32**

# 350 Gray Wiring Diagram



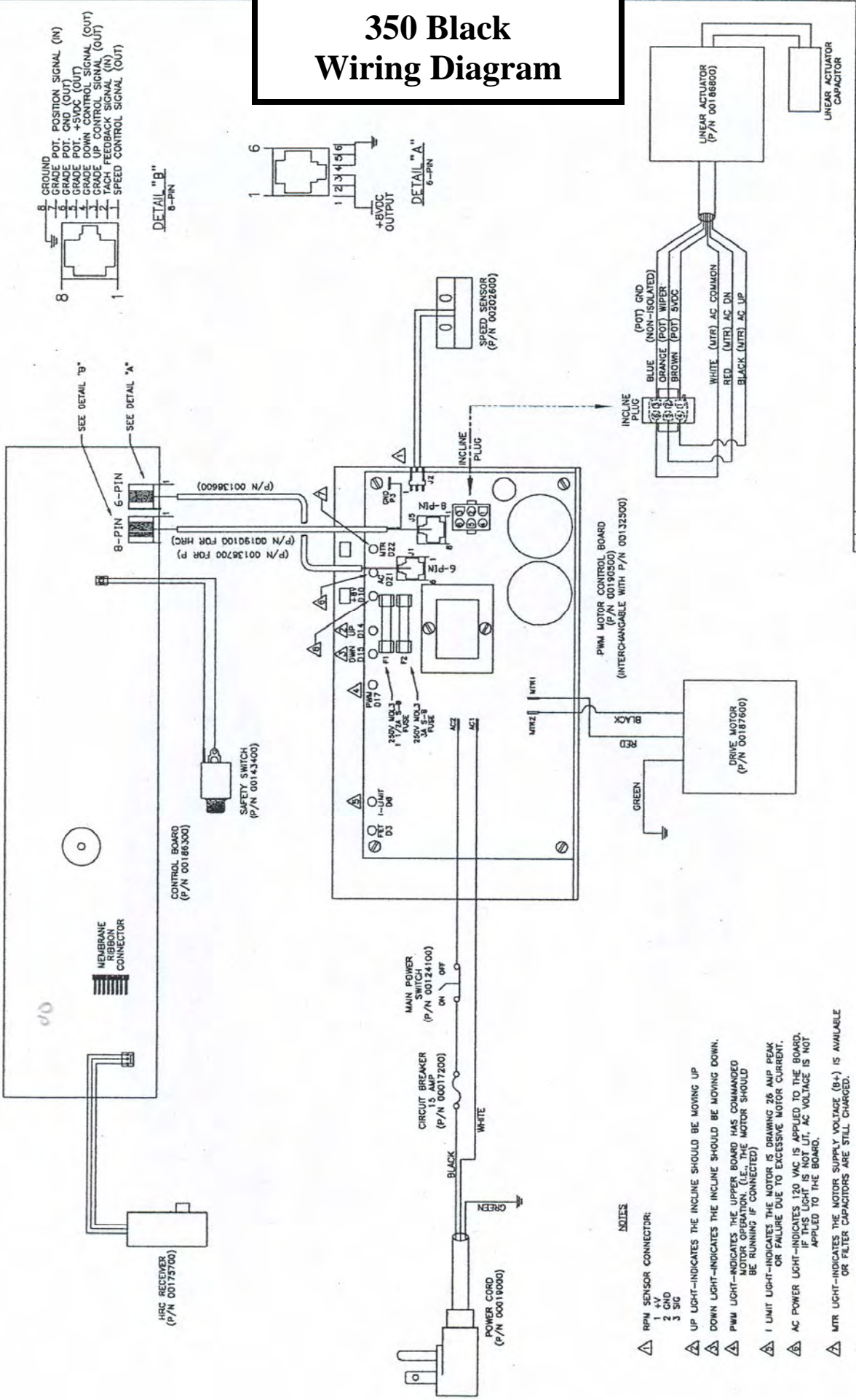
- NOTES**
- ⚠ RPM SENSOR CONNECTOR:  
1 GND  
2 GND  
3 SIG
  - ⚠ UP LIGHT-INDICATES THE INCLINE SHOULD BE MOVING UP
  - ⚠ DOWN LIGHT-INDICATES THE INCLINE SHOULD BE MOVING DOWN.
  - ⚠ PWM LIGHT-INDICATES THE UPPER BOARD HAS COMMAND MOTOR OPERATION. (I.E., THE MOTOR SHOULD BE RUNNING IF CONNECTED)  
OR FAILURE DUE TO EXCESSIVE MOTOR CURRENT.
  - ⚠ I LIMIT LIGHT-INDICATES THE MOTOR IS DRAWING 26 AMP PEAK
  - ⚠ AC POWER LIGHT-INDICATES 120 VAC IS APPLIED TO THE BOARD. IF THIS LIGHT IS NOT LT. AC VOLTAGE IS NOT APPLIED TO THE BOARD.
  - ⚠ MTR LIGHT-INDICATES THE MOTOR SUPPLY VOLTAGE (B+) IS AVAILABLE  
OR FILTER CAPACITORS ARE STILL CHARGED.
  - ⚠ +8V SUPPLIES CONTROL PANEL.

REVISIONS

NO.	DATE	BY	DESCRIPTION
1	7/7/87	JLF	INITIAL REV
2			
3			
4			
5			
6			
7			
8			
9			
10			

WIRING DIAGRAM  
 MODEL: 350  
 DATE: 7/7/87  
 DRAWN BY: JLF  
 CHECKED BY: JLF  
 APPROVED BY: JLF  
 PART NO: 350SERY  
 CATALOG NO. 83222

# 350 Black Wiring Diagram



**NOTES**

- ▲ RPM SENSOR CONNECTOR:
  - 1 GND
  - 2 GND
  - 3 SIG
- ▲ UP LIGHT-INDICATES THE INCLINE SHOULD BE MOVING UP
- ▲ DOWN LIGHT-INDICATES THE INCLINE SHOULD BE MOVING DOWN.
- ▲ PWM LIGHT-INDICATES THE UPPER BOARD HAS COMMANDED MOTOR OPERATION. (I.E., THE MOTOR SHOULD BE RUNNING IF CONNECTED)
- ▲ I LIMIT LIGHT-INDICATES THE MOTOR IS DRAWING 26 AMP PEAK OR FAILURE DUE TO EXCESSIVE MOTOR CURRENT.
- ▲ AC POWER LIGHT-INDICATES 120 VAC IS APPLIED TO THE BOARD. IF THIS LIGHT IS NOT LIT, AC VOLTAGE IS NOT APPLIED TO THE BOARD.
- ▲ MTR LIGHT-INDICATES THE MOTOR SUPPLY VOLTAGE (B+) IS AVAILABLE OR FILTER CAPACITORS ARE STILL CHARGED.
- ▲ +8V SUPPLIES CONTROL PANEL.

WIRING DIAGRAM

350

DATE	7/7/94	BY	DL
REV	1	DATE	7/7/94
DESCRIPTION	350SERV		

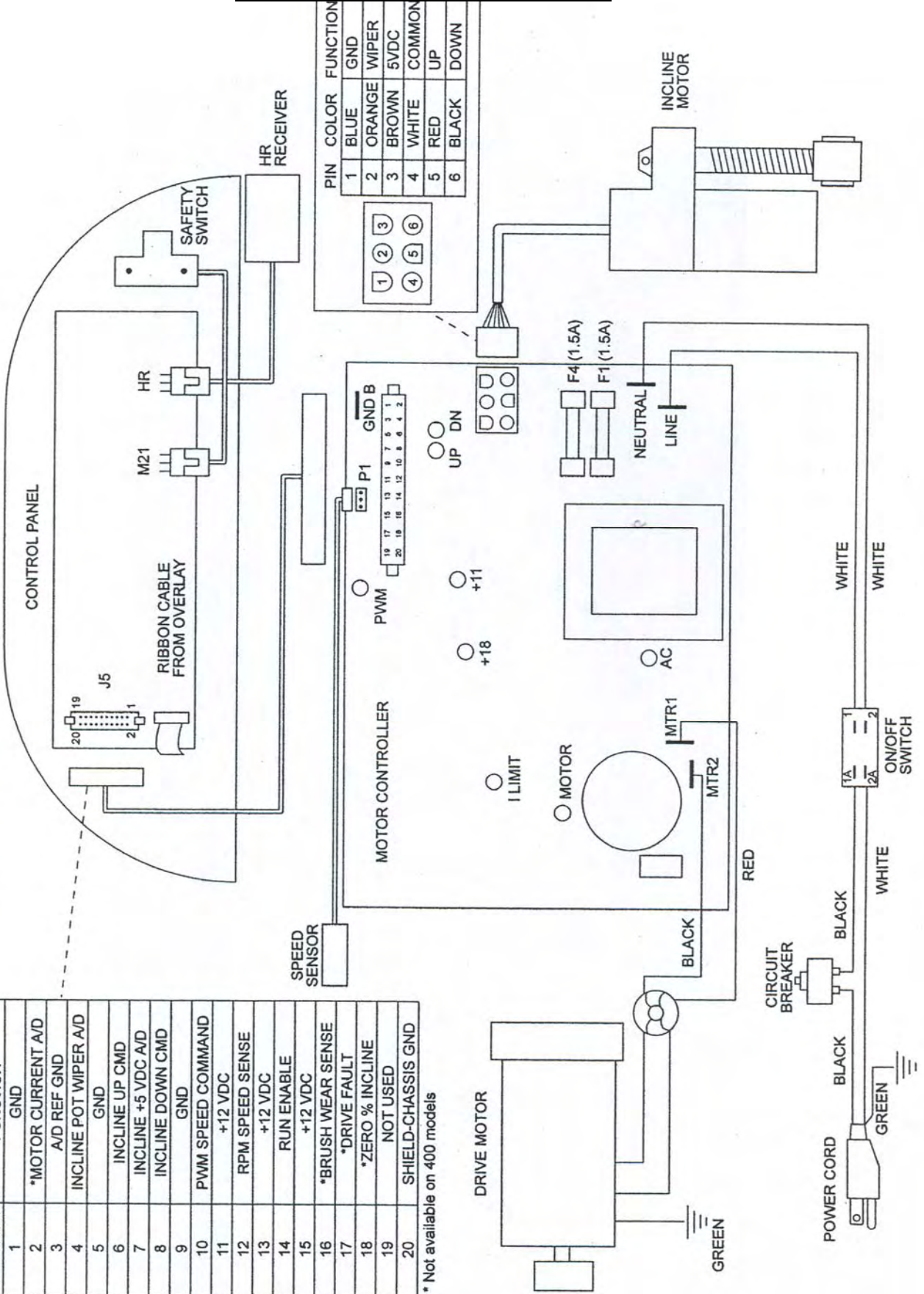


# 400 Wiring Diagram

## 400 Wiring Diagram

UPPER WIRE HARNESS	
POSITION	FUNCTION
1	GND
2	*MOTOR CURRENT A/D
3	A/D REF GND
4	INCLINE POT WIPER A/D
5	GND
6	INCLINE UP CMD
7	INCLINE +5 VDC A/D
8	INCLINE DOWN CMD
9	GND
10	PWM SPEED COMMAND
11	+12 VDC
12	RPM SPEED SENSE
13	+12 VDC
14	RUN ENABLE
15	+12 VDC
16	*BRUSH WEAR SENSE
17	*DRIVE FAULT
18	*ZERO % INCLINE
19	NOT USED
20	SHIELD-CHASSIS GND

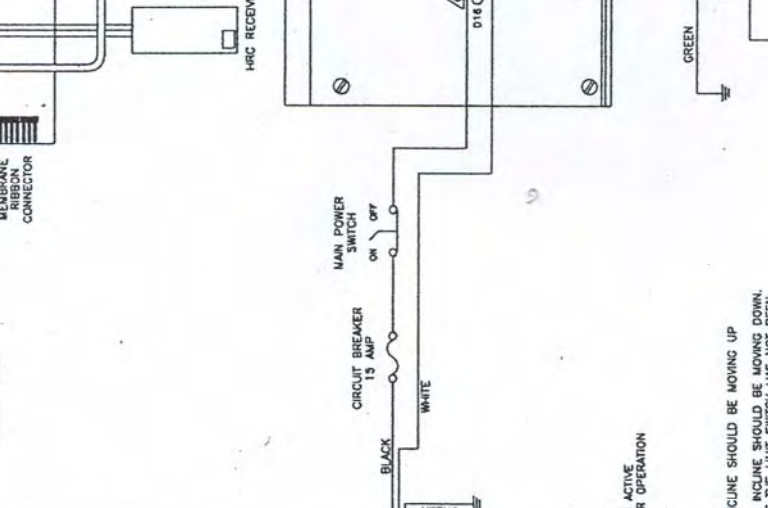
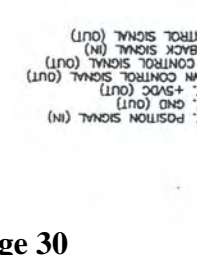
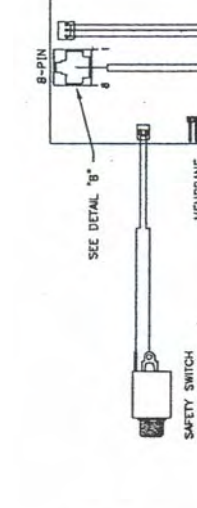
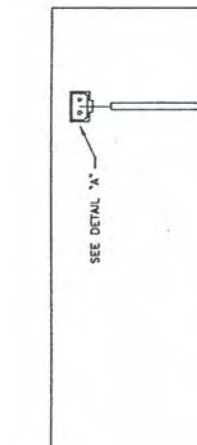
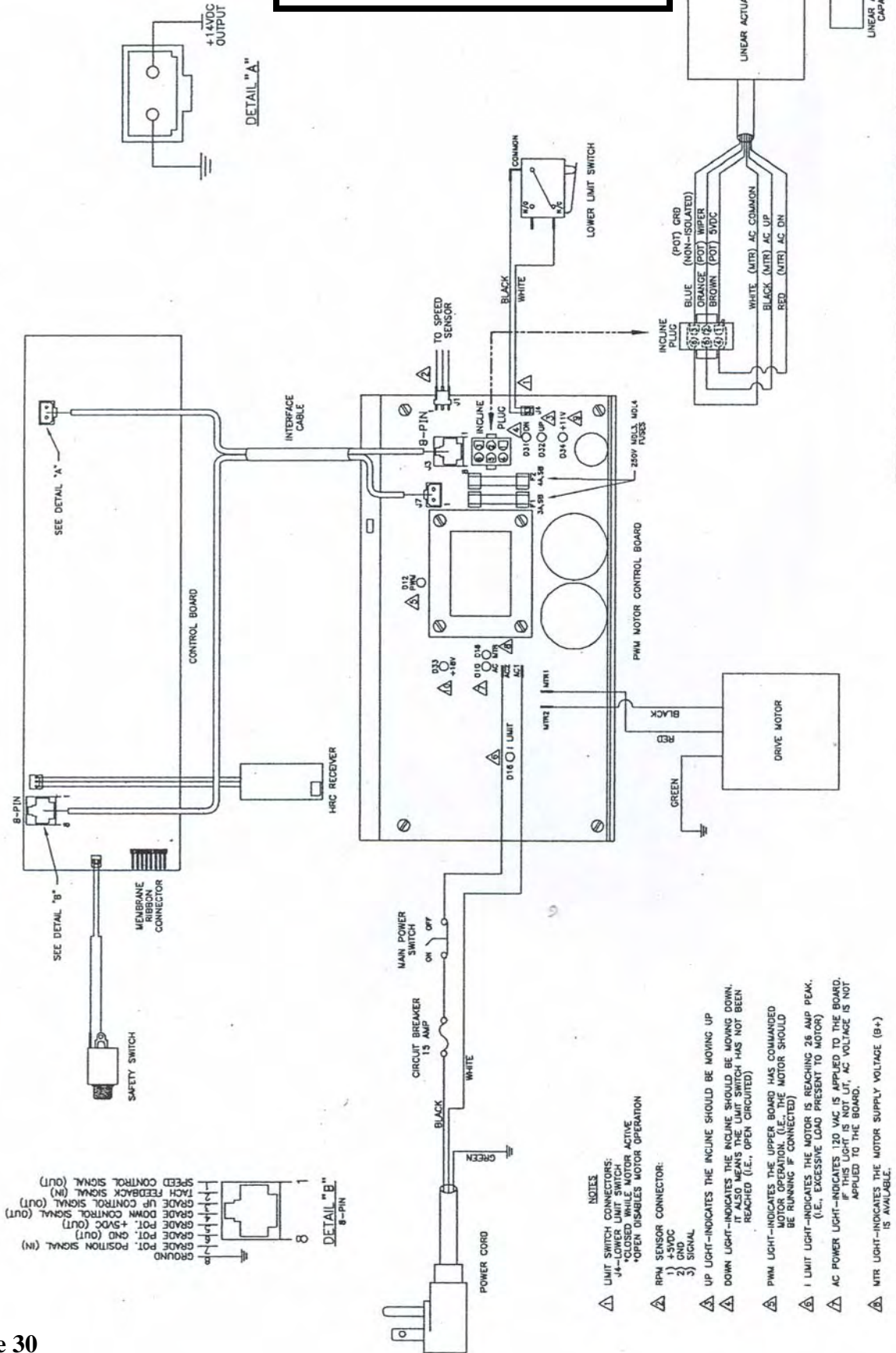
\* Not available on 400 models







# 500CI/750CI Wiring Diagram



REVISION		DATE		BY	

WIRING DIAGRAM	500CI/750CI - SSS5
DATE	
DRAWN BY	
CHECKED BY	
APPROVED BY	

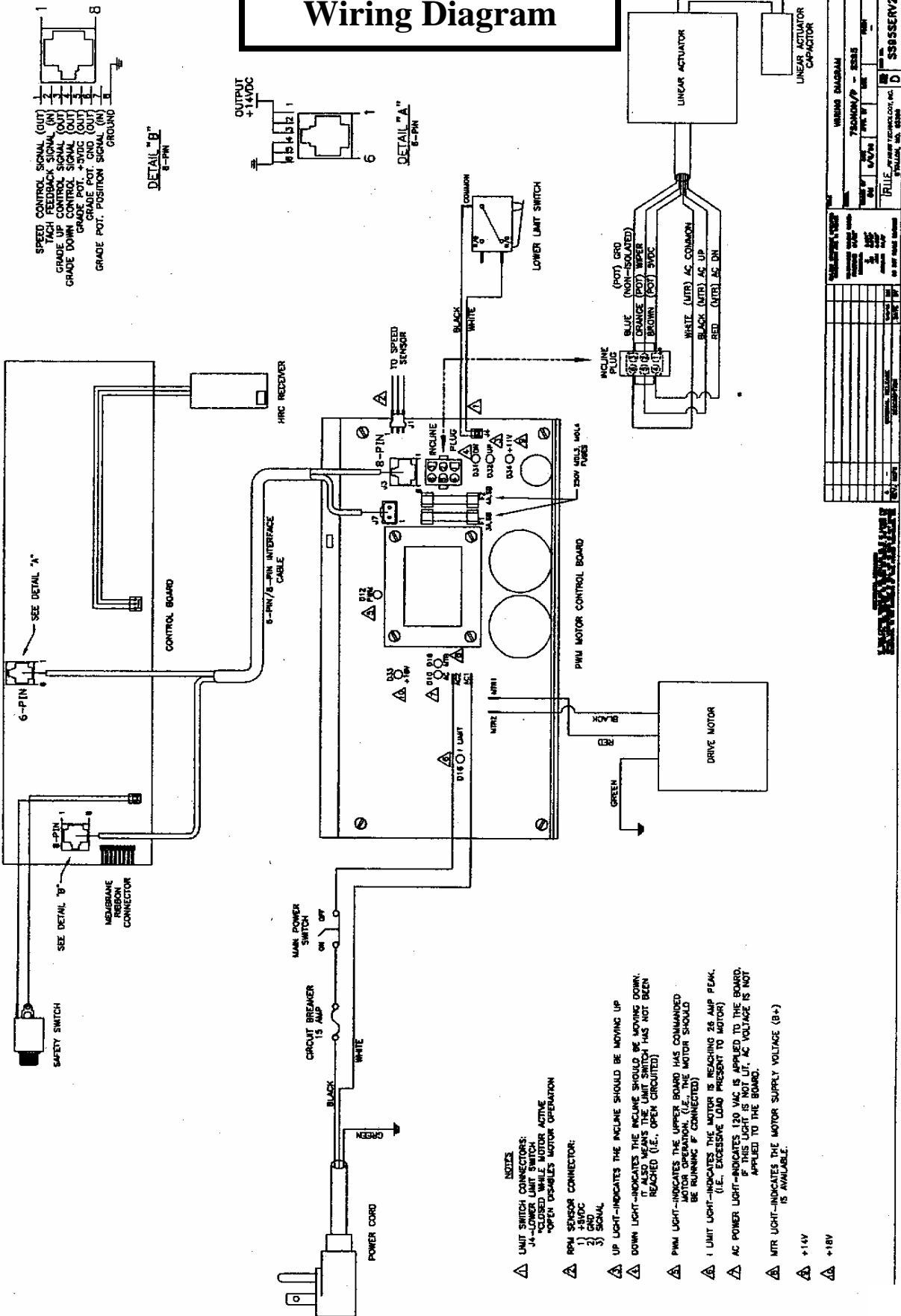

ORIGIN: MILWAUKEE  
 RECEIPT NO.    
 DATE  

REVISED BY    
 DATE  

REVISIONS



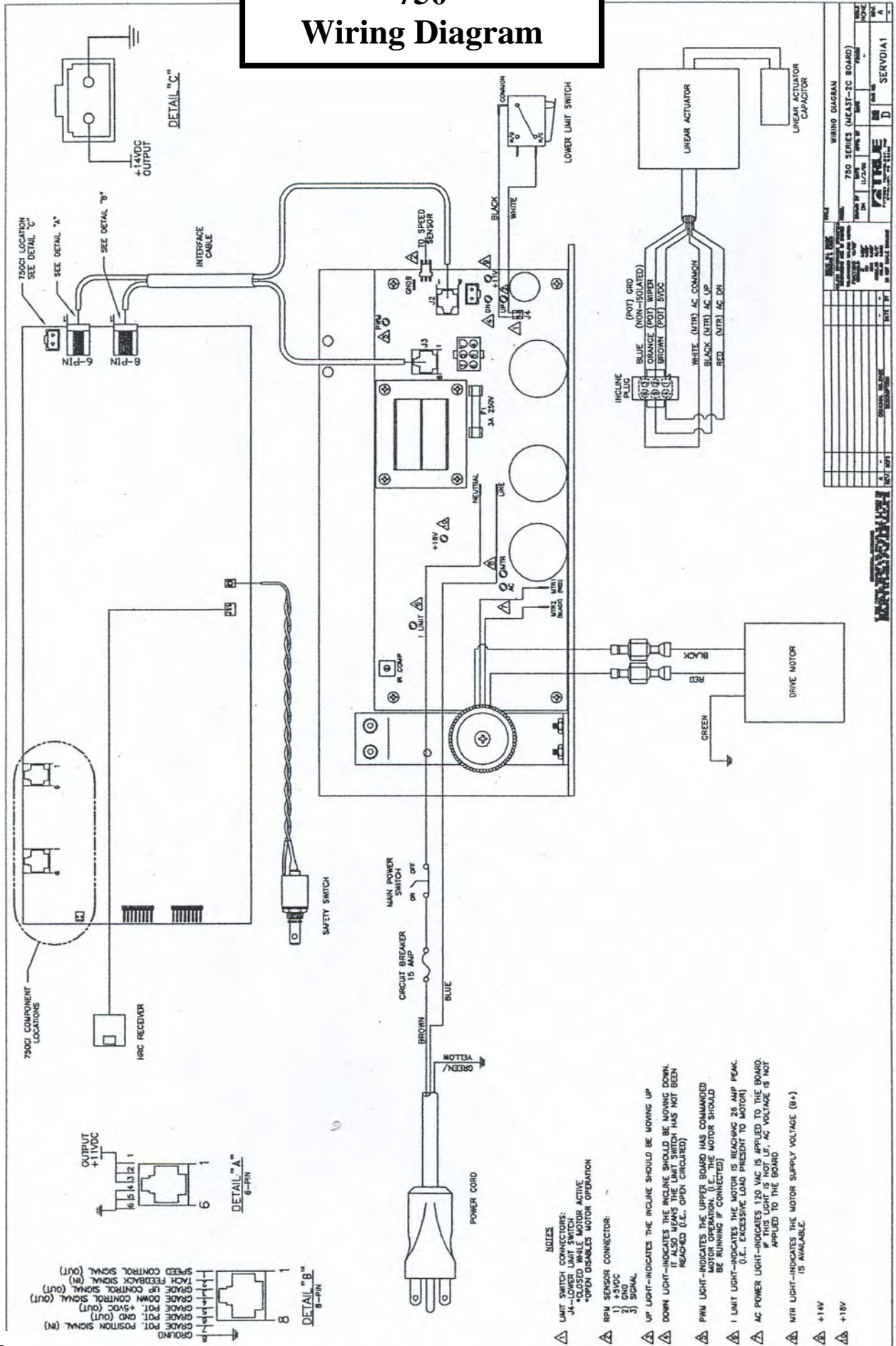
# 500CI/750CI Wiring Diagram



- INDEX**
- △ LIMIT SWITCH CONNECTORS:
    - 1) +14VDC
    - 2) +18VDC
    - 3) SIGNAL
  - △ RPM SENSOR CONNECTOR:
    - 1) +14VDC
    - 2) GND
    - 3) SIGNAL
  - △ UP LIGHT-INDICATES THE INCLINE SHOULD BE MOVING UP
  - △ DOWN LIGHT-INDICATES THE INCLINE SHOULD BE MOVING DOWN. IT ALSO MEANS THE LIMIT SWITCH HAS NOT BEEN REACHED (I.E., OPEN CIRCUIT)
  - △ PWM LIGHT-INDICATES THE UPPER BOARD HAS COMMANDED THE MOTOR TO RUN. (I.E., THE MOTOR SHOULD BE RUNNING & CONNECTED)
  - △ I LIGHT-INDICATES THE MOTOR IS REACHING 26 AMP PEAK. (I.E., EXCESSIVE LOAD PRESENT TO MOTOR)
  - △ AC POWER LIGHT-INDICATES 120 VAC IS APPLIED TO THE BOARD. THIS LIGHT IS NOT LT. AC VOLTAGE IS NOT APPLIED TO THE BOARD.
  - △ MTR LIGHT-INDICATES THE MOTOR SUPPLY VOLTAGE (B+) IS AVAILABLE.
  - △ +14V
  - △ +18V

WIRING DIAGRAM		7500000/P - 00015	
REV	DATE	BY	CHK BY
1			
2			
3			
4			
5			
6			
7			
8			
9			
10			
11			
12			
13			
14			
15			
16			
17			
18			
19			
20			
21			
22			
23			
24			
25			
26			
27			
28			
29			
30			
31			
32			
33			
34			
35			
36			
37			
38			
39			
40			
41			
42			
43			
44			
45			
46			
47			
48			
49			
50			
51			
52			
53			
54			
55			
56			
57			
58			
59			
60			
61			
62			
63			
64			
65			
66			
67			
68			
69			
70			
71			
72			
73			
74			
75			
76			
77			
78			
79			
80			
81			
82			
83			
84			
85			
86			
87			
88			
89			
90			
91			
92			
93			
94			
95			
96			
97			
98			
99			
100			

# 750 Wiring Diagram



# **Model 350-450**

# **Parts List**

- **350, P, HRC** **Page 34**
- **350PB, HRCB** **Page 37**
- **400, P, HRC** **Page 39**
- **450, P, HRC (SS100-SS90)** **Page 41**

# 350P, HRC PARTS LIST

**PART #      DESCRIPTION**

**CONTROL PANEL**

**350 Board Only**      70186311      350 P Board Only  
**(98- Present)**      70186310      350 HRC Board Only

**(98-PRESENT)**      70186401      350P CONTROL PANEL 98-now  
 70186402      350HRC CONTROL PANEL 98-NOW

**(HARDWARE)**

70185400      HRC RECEIVER ASSY.  
 70151900      5/8" DOME PLUG FOR HR RECEIVER  
 70176000      C.P. TAPE 3/8 DOUBLE COATED FOAM  
 70150000      SAFETY SWITCH ASSY.  
 70177400      SAFETY KEY ASSY.

**OVERLAYS**

70186411      350P GRAY OVERLAY  
 70186412      350HRC GRAY OVERLAY

**PWM**

LOWER BOARD (PWM)

70013500      PWM SCREW 10-32 X 3/8 PPHTF  
 70350300

**SPEED SENSOR**

70202600      SPEED SENSOR  
 70350300      EXTENDER WIRE FROM SENSOR -PWM  
 70190800      SPEED SENSOR SCREW

**DATA CABLE**

70138600      6- CONDUCTOR INTERFACE CABLE  
 70138700      8- CONDUCTOR INTERFACE CABLE  
 70190100      8- CONDUCTOR INTERFACE CABLE- HRC

**DRV MTR**

70187600      DRIVE MOTOR ASSY.  
 70166600      MOTOR DRIVE PULLEY  
 70173400      MOTOR COVER

**DRV BELT**

70127500      POLY-V-BELT

**ELEVATION MTR**

70186800      INCLINE MOTOR  
 70183600      CLEVIS PIN 3/8 X 1 3/4  
 70116700      COTTER PIN 1/16 X 1 5/16  
 70183700      CLEVIS PIN 3/8 X 2 1/8  
 70164800      COTTER PIN 3/32 X 1/2  
 70183200      INCLINE CAPACITOR

### ELEVATION RACK

70184401 ELEVATION RISER ASSY.  
70176700 MOLDED WHEEL  
70182300 INCLINE RISER BOLT 5/16- 18 X 1 1/4  
70115200 INCLINE RISER WASHER 3.8 I.D. X 7/8 O.D.  
70209900 INCLINE RISER NUT 5/16- 18 AUTOMATION GR.

### POWER CORD

70253100 9FT. POWER CORD  
70008200 STRAIN RELIEF BUSHING

### ON / OFF SWITCH

70251100 ROCKER ON/OFF SWITCH

### CIRCUIT BREAKER

70017200 15 AMP CIRCUIT BREAKER

### TREADBELT

70208500 TREADBELT 18" X 107"

### DECK

70186700 FLEX DECK ASSY.  
70020200 DECKSCREWS/BUMPER FEET 10- 32 X 1 1/4 PPH

### FRONT ROLLER

70217500 FRONT ROLLER ASSY.  
70188500 FR ROLLER BOLT 1/4- 20 X 2 Gr. 5 Hex Hd.  
70185300 FR ROLLER NUT 1/4- 20 NYLOC NUT

### REAR ROLLER

70188000 REAR ROLLER ASSY.  
70175100 REAR ROLLER COVER-LEFT  
70175200 REAR ROLLER COVER-RIGHT  
70104000 R ROLLER SCREW 10 X 1/2 PPH Tek Screw

### STRADDLE COVERS

70173301 STRADDLE COVER- L.H. 350P  
70173302 STRADDLE COVER- R.H. 350P  
  
70173303 STRADDLE COVER- L.H. 350 HRC  
70173304 STRADDLE COVER- R.H. 350 HRC  
  
70086700 STRADDLE COVER SCREW 6 X 1  
70182400 INSIDE COVER SPACER  
70030900 3/8 X 1/16 X Lg. DOUBLE STICK TAPE  
70165400 OUTSIDE COVER SPACER

### RAMRAILS

70188700 HANDRAIL ASSY. L.H. BLACK  
70188800 HANDRAIL ASSY. R.H. BLACK

70212300 HANDRAIL ASSY. L.H. GRAY

70212400 HANRAIL ASSY. R.H. GRAY

70185100 LOWER HANDRAIL BUSHING 1/4- 20 X 3 3/4

70198900 LOWER HANDRAIL BUSHING 3/8 OD X 1"

70183101 H/BAR NUT PLATE

**PEDESTAL**

70157000 PED. STAR WASHER 1/4 I.D.INTERNAL TOOTH WASHER

70186600 PEDESTAL WELDMENT

70179901 STRAP CLAMP PED.

70155900 PED. SCREW 1/4- 20 X 5/8 BHSCS

**FRAME**

70181901 FRAME WELDMENT

70160100 BUMPER ASSY

70155200 BUMPER- 1 1/2 X 2 X 1 1/8

# 350PB, HRCB PARTS LIST

<u>CONTROL PANEL</u>	<u>PART #</u>	<u>DESCRIPTION</u>
<u>(350B) Board Only</u>	70237311	350PB Board Only
	70237310	350HRCB Board Only
	70242000	350PB CONTROL PANEL
	70242001	350HRCB CONTROL PANEL
	70150000	SAFETY SWITCH ASSY.
	70185400	HEART RATE RECIEVER
	70245100	PLASTIC HRC COVER
	70177400	SAFETY KEY
 <u>OVERLAY</u>		
	70242010	350PB DOT/OVERLAY
	70242011	350HRCB DOT/OVERLAY
 <u>PWM</u>		
<u>(99-PRESENT)</u>	70244200	PWM MOTOR CONTROLLER
	70013500	PWM SCREW 10-32X3/8
 <u>SPEED SENSOR</u>		
	70243203	CIRCUIT BOARD SPEED SENSOR
	70243300	SPEED SENSOR SCREW 4-40X1/4
 <u>DATA CABLE</u>		
	70264100	6COND./CORD DATA CABLE 350PB, HRCB
	70264000	8COND./CORD DATA CABLE 350PB
	70190100	8-CONDUCTOR INTERFACE CABLE(HRC)
 <u>DRV MTR</u>		
	70245600	DRIVE MOTOR Core charge included
 <u>DRV BELT</u>		
	70127500	1687J10 POLY-V-BELT
 <u>ELEVATION MTR</u>		
<u>(HARDWARE)</u>	70186800	ELEVATION MOTOR-HUBBLE
	70183200	ELEVATION MOTOR CAPACITOR
	70183600	INCLINE MOTOR CLEVIS PINS 3/8X1 3/4
	70116700	INCLINE MOTOR COTTER PIN 1/16X1-5/16
	70183700	INCLINE MOTOR CLEVIS PIN 3/8X2-1/8
	70164800	INCLINE MOTOR COTTER PIN 3/32X1/2
 <u>ELEVATION RACK</u>		
	70184402	ELEVATION RACK

**(NEW STYLE)**

70176700 MOLDED WHEEL  
70182300 INCLINE RISER BOLT 5/16X1 1/4  
70115200 INCLINE RISER WASHER 3/8 I.D.  
70209900 INCLINE RISER NUT 5/16-18

**POWER CORD**

70253100 9 FOOT POWER CORD  
70008200 STRAIN RELIEF BUSHING

**ON / OFF SWITCH**

70251100 ON/OFF ROCKER SWITCH

**CIRCUIT BREAKER**

70017200 15 AMP CIRCUIT BREAKER

**TREADBELT**

70208500 TREADBELT 18" X 107"

**DECK**

70186700 FLEX DECK  
70020200 DECK SCREWS  
70232700 DECK BUMPERS

**FRONT ROLLER****(ADJUSTABLE)**

70260100 FRONT ROLLER W/8 MAGNETS  
70188500 FRONT ROLLER BOLT 1/4-20X2 GR. 5  
70185300 FRONT ROLLER NYLOK NUT 1/4-20

**REAR ROLLER**

70188000 REAR ROLLER  
70220800 REAR ROLLER COVER LH BLACK  
70220900 REAR ROLLER COVER RH BLACK  
70104000 10X1/2 REAR ROLLER SCREW

**STRADDLE COVERS**

70173305 LH STRADDLE COVER BLACK  
70173306 RH STRADDLE COVER BLACK  
70086700 STRADDLE COVER SCREW 6X1  
70030900 DOUBLE SIDED STICK TAPE

**PEDESTAL**

70157000 PEDESTAL STAR WASHER  
70173401 MOTOR COVER  
70155200 BUMPER FEET  
70020200 BUMPER FEET SCREWS  
70183101 H/BAR NUT PLATE



# 400P, HRC PARTS LIST

## Control Panels

7T007500	400P Control Panel assy w/ Electronics
7T007501	400HRC Control Panel assy W/ Electronics
7T007502	400P Electronics Only
7T007503	400HRC Electronics Only
7T008000	Upper Plastic Front and Rear (400HRC)
7T008001	Upper Plastic Front and Rear (400P)

## Overlays

7T010201	Panel Overlay 400P
7T010200	Panel Overlay 400HRC
7T014200	Panel Overlay T-400HRC

## PWM

7T007400	PWM W/O Hardware
7T008500	Speed sensor
7T013900	PWM W/O Hardware (230V)

## Filter

7T014800	Filter, EMI 400 250V/10A CP6-1022C
7T014000	Bracket, Filter 400 (T=2.0)
7T014100	Bracket Screw Phillips Head M5X0.8X6L UCP

## Choke

7T014400	Choke, 400 3MH 220V
----------	---------------------

## Inductor

7T014900	Inductor (choke) 400 6MH 8A
----------	-----------------------------

## Data Cable

7T007600	Wire Harness
----------	--------------

## Drive Motor

7T007800	2.75 HP Drive Motor
7T014300	2.75 HP Drive Motor 230V

## Drive Belt

7T008400	Drive Belt
----------	------------

## Elevation Motor

7T009600	Elevation Motor
7T009700	Front Wheel
7T014500	Elevation Motor 230V 1/6HP

## Power Cord

7T009800	Power Cord
----------	------------

7T014600 Power Cord 400 AC220V 1.5MM 2800MM

**On/Off Switch**

7T009900 On/Off Switch

**Circuit Breaker**

7T010000 Circuit Breaker

7T014700 Circuit Breaker 400 10A 220V 400RFMB Series

**Tread belt**

7T008300 Tread belt

**Deck**

7T008600 Deck, pre drilled

**Front Roller**

7T008100 Front Roller

**Rear Roller**

7T008200 Rear Roller

7T009200 Roller Cover - L

7T009300 Roller Cover - R

**Straddle Covers**

7T009500 Straddle Cover Set

**Hardware Kit**

7T007900 Complete Hardware Kit

**Heart Rate Strap**

7TMC0608006 HRC Strap

**Safety Key**

7T010300 Safety Key

# 450P, HRC (SS100-SS90) PARTS LIST

<u>CONTROL PANEL</u>	<u>PART #</u>	<u>DESCRIPTION</u>
<u>(SS100)</u>	70120000	450NON SS100CONTROL PANEL
	70120100	450P SS100 CONTROL PANEL
	70175900	450HRC SS100 CONTROL PANEL
<u>(450's) Board Only</u>	70132418	450NON SS90 CONTROL Board Only 97-98
	70132417	450P SS90 CONTROL Board Only 97-98
	70132416	450HRC SS90 CONTROL Board Only 97-98
<u>(97-98 STYLE)</u> <u>(OVERLAYS)</u>	70161011	450NON SS90 OVERLAY 97-98
	70161013	450P SS90 OVERLAY 97-98
	70161012	450HRC SS90 OVERLAY 97-98
<u>(99-PRESENT)</u>	70242110	450NON DOT OVERLAY 99-PRESENT
	70242111	450P DOT OVERLAY 99-PRESENT
	70242112	450HRC DOT OVERLAY 99-PRESENT
<u>PWM</u> <u>(SS100)</u>	70113900	MOTOR CONTROLLER (SS100)
<u>(SS90)</u>	70132500	MOTOR CONTROLLER SS90
	70013500	PWM SCREW 10-32 X 3/8
<u>SPEED SENSOR</u> <u>(SS100 STYLE)</u>	70104200	SPEED SENSOR (SS100)
	70154800	SPEED SENSOR W/ WIRE AND BRACKE
<u>(SS90 STYLE)</u>	70243200	CIRCUIT BOARD SPEED SENSOR
	70243300	SP. SENSOR SCREW 4-40 X 1/4
<u>DATA CABLE</u>	70337900	450NON AND PROG. DATA CABLE
	70337800	450 HRC DATA CABLE
<u>DRV MTR</u>	70325500	3HP DRIVE MOTOR 10 MPH
<u>DRV BELT</u>	70006300	210J10 POLY-V DRIVE BELT
<u>ELEVATION MTR</u> <u>(ELEVATION- HARDWARE)</u>	70113200	INCLINE MOTOR
	70115500	3/8 X 1 1/2 CLEVIS PIN
	70116700	1/16 DIA. X 1 5/16 COTTER PIN

	70118900	TORQUE ARM SWIVEL PIN
	70183200	START CAPACITOR FOR INCLINE MOTOR
	70013500	SCREW FOR START CAPACITOR
<b><u>LLS</u></b>		
	70121000	LOWER LIMIT SWITCH
	70125700	LLS SCREW 10X 1/4
	70120500	LLS TO PWM WIRE
<b><u>ELEVATION RACK</u></b>		
	70281001	ELEVATION RISER SUB ASSY.
<b><u>WHEEL</u></b>	70176700	BEFORE AUG 99
<b><u>POWER CORD</u></b>		
	70253100	9 FT. POWER CORD
	70008200	STRAIN RELIEF BUSHING
<b><u>ON / OFF SWITCH</u></b>		
	70251100	ROCKER ON/OFF SWITCH
<b><u>CIRCUIT BREAKER</u></b>		
	70017200	15 AMP CIRCUIT BREAKER SWITCH
<b><u>TREADBELT</u></b>		
	70159300	17 3/4" X 107 3/4" 2 PLY TREADBELT
<b><u>DECK</u></b>		
	70157700	FLEX DECK
	70020200	DECK SCREW 10/32 X 1 1/4
<b><u>FRONT ROLLER</u></b>		
<b><u>(SS100-NARROW)</u></b>	70123800	FRONT ROLLER (SS100)
<b><u>(96-xxxx - 99)</u></b>	70217000	450 FRONT ROLLER(6-8XXXX-99)
<b><u>(99-81023G TO)</u></b>		
<b><u>(PRESENT)</u></b>	70359200	450 ADJ. ROLLER
<b><u>REAR ROLLER</u></b>		
	70359000	REAR ROLLER
	70158900	ROLLER BOLT
	70159000	5/16 INTERNAL TOOTH LOCK WASHER
<b><u>STRADDLE COVERS</u></b>		
	70162000	LT & RT STRADDLE COVERS
	70030900	3/8 X 1/16 X 108 FT. DBL. STICK TAPE
	70243400	BLUE TAPE 1/2 X 150 FT. ROLL
<b><u>PEDESTAL</u></b>		
<b><u>(98 style)</u></b>	70176800	Pedestal Weldment, 450 W/ end caps
<b><u>(99- 00 style)</u></b>	70233200	ROUND PEDESTAL WELDMENT
	70155900	PEDESTAL SCREWS
<b><u>FRAME</u></b>		
	70255903	FRAME WELDMENT ADJ. FRONT ROLLER
	70155200	BUMPER FEET
	70020200	BUMPER FEET SCREW 10/32X1 1/4PPH

# **Model 500-550**

# **Parts List**

- **500, P, HRC (SS100-SS90)                      Page 44**
- **500Z & ZT, P, HRC                                      Page 48**
- **540, P, HRC, CI (NON Z)                              Page 51**
- **540Z, ZT, P, HRC, CI                                      Page 54**
- **550, P, HRC    Page 57**
- **550z, P, HRC, CI    Page 59**
- **550 ZTX, P, HRC, CI                                      Page 61**

# 500P, HRC (SS100-SS90) PARTS LIST

<u>PART #</u>	<u>DESCRIPTION</u>
<b><u>CONTROL PANEL</u></b>	
<b><u>500 Boards Only (SS90)</u></b>	70132415 500NON Board Only
<b><u>Up to 98 with a letter</u></b>	70132414 500P Board Only
	70132413 500HRC Board Only
	70176911 500CI Board Only
<b><u>500 (99 Style Board Only)</u></b>	70237523 500P Board Only
<b><u>(98 with a letter)</u></b>	70237522 500HRC Board Only
	70237612 500CI Board Only
<b><u>500A (2000) Style Board Only</u></b>	70237415 500A NON Board Only
	70237414 500A P Board Only
	70237413 500A HRC Board Only
	70018100 CHERRY SWITCH (SS100)
	70150000 SAFETY SWITCH-ASSY
	70177400 SAFETY KEY
	70020400 SAFETY SWITCH SCREWS
	70020600 SAFETY SWITCH NUTS
	70185400 HEART RATE RECEIVER
	70138500 POLAR HEART RATE CHEST STRAP
	70284100 Old 500
	70240503 EXTRUSION-PANEL CLIP 26 3/4"
<b><u>OVERLAY</u></b>	
<b><u>(SS100 OVERLAY)</u></b>	70119301 500 NON OVERLAYS-SS100
	70119901 500P OVERLAYS-SS100
	70179701 500 HRC OVERLAYS-SS100
<b>(98 OVERLAY)</b>	70160811 500 NON SS90 OVERLAY 98 STYLE
	70160813 500 P SS90 OVERLAY 98 STYLE
	70160812 500 HRC SS90 OVERLAY 98 STYLE
<b>(99 OVERLAY)</b>	70242211 DOT/OVERLAY ASSY, 500P
<b><u>(98 with a letter)</u></b>	70242212 DOT/OVERLAY ASSY, 500HRC
<b>(2000 STYLE)</b>	70265100 DOT / OVERLAY ASSY, 500A
	70265011 DOT / OVERLAY ASSY, 500A HRC
	70265012 DOT / OVERLAY ASSY, 500A P
	70242410 DOT / OVERLAY ASSY, 500CI
<b><u>PWM</u></b>	
<b><u>(SS100)</u></b>	70113900 PWM MOTOR CONTROLLER-SS100
	70132500 SS90 PWM MOTOR CONTROLLER

	70183500	500CI PWM [96-80000]-[98-80000]SS95
<b><u>SPEED SENSOR</u></b>	70154800	SPEED SENSOR ASSY.-SS100
	70243200	SS90 SPEED SENSOR NEW STYLE
<b><u>DATA CABLE</u></b>	70119400	DATA CABLE-SS100 NON, P, HRC
<b>(SS100)</b>	70120400	LOWER WIRE HARNESS-SS100
	70337900	INTF. CABLE ASSY 500 N/P SS90
	70337800	INTF. CABLE ASSY 500 HRC SS90
<b><u>DRV MTR</u></b>	70155101	DRIVE MOTOR-2.0 10MPH
<b>(SS100)</b>	70155102	DRIVE MOTOR-2.5 12MPH
	70325500	DRIVE MOTOR 3HP SS90-Z SERIES
	70125600	DRIVE MOTOR-CARRIAGE BOLT
<b><u>DRV BELT</u></b>	70006300	DRIVE BELT 210J10-V BELT
<b><u>ELEVATION MTR</u></b>	70113200	ELEVATION MOTOR
	70118900	SWIVEL PIN
	70183200	INCLINE START CAPACITOR
	70115500	CLEVIS PIN 3/8 DIA. 1 1/2" LONG
	70116700	COTTER HAIR PIN .062 DIA.
	70022600	SET SCREW, INCLINE, SWIVEL PIN
<b><u>LLS</u></b>	70121000	LOWER LIMIT SWITCH
	70120500	WIRE-PWM TO LOWER LIMIT SWITCH
<b><u>ELEVATION RACK</u></b>	70281002	ELEVATION RACK
	70154600	INCLINE BEARING BLOCK
	70126200	FLANGED INCLINE BEARING
<b><u>WHEEL / BOLTS</u></b>	70176700	MOLDED WHEEL, 2 1/4" DIA. 3/8 HOLE
	70003100	SHOULDER BOLT-FRONT WHEEL 3/8 X 1"
<b><u>(NEW STYLE)</u></b>	70176701	MOLDED WHEEL, 2 1/4" DIA 1/2" HOLE
	70174300	1/2" X 1" SHOULDER BOLT
<b><u>POWER CORD</u></b>	70253100	POWER CORD, 120 VAC
	70013900	BUSHING-3/8"BLACK
	70008200	STRAIN RELIEF BUSHING

**ON / OFF SWITCH**

70251100 ON/OFF SWITCH  
70261000 220V ON/OFF SWITCH

**CIRCUIT BREAKER**

70017200 15 AMP CIRCUIT BREAKER

**TREADBELT**

70159400 TREADBELT  
70058100 STRETCH-TREADBELT  
70058200 ORTHO-TREADBELT-20X108 ROL-TOP  
70068500 ORTHO-STRETCH TREADBELT

**DECK  
(SS100)**

70072800 DECK ASSY  
70072700 STRETCH DECK ASSY  
  
70157900 FLEX DECK ASSY. 500/WELDED  
70157800 STRETCH DECK ASSY, 500S/WELDED

**(DECK HARDWARE)**

70232700 DECK BUMPER-ASSY.  
70086700 DECK BUMPER SCREWS  
70020200 DECK SCREW 10-32 X 1 1/4"

**FRONT ROLLER  
(SS100)**

70119500 FRONT ROLLER-95 WIDE WITH 4 MAG.  
70207800 ROLLER SCREW

70217300 FRONT ROLLER ASSY, '99

97

**HARDWARE - ADJ.**

70255400 FRONT ROLLER ASSY, ADJ. '00  
70188500 BOLT 1/4-20 / ADJ. END  
70185300 NUT 1/4-20  
70256800 FLAT WASHER  
70190900 FLANG BOLT 1/4-20 FIXED END

**REAR ROLLER  
(SS100)**

70073600 REAR ROLLER ASSY SS100  
  
70157400 REAR ROLLER ASSY, WELDED SS90

**STRADDLE COVERS**

**(SS100)** 70074700 STRADDLE COVER-RIGHT SIDE  
70074900 STRADDLE COVER-LEFT SIDE  
  
70162101 STRADDLE COVER ALM. '99 STYLE  
70162102 STRETCH STRDL. CVR. ALM. '99 STYLE

70263900 STRADDLE COVER PLASTIC 500A,P,HRC



**PEDESTAL****(SS100)**

70122200	PEDESTAL ASSEMBLY-VINYL
70070200	HANDLEBAR
70155900	PEDESTAL SCREW
70013500	HANDLEBAR SCREWS #10-32X3/8

**('98 STYLE)**

70179600	PED.-WELDMENT 500NON,P,HRC '98
70179500	PED.-WELDMENT 500CI '98

**('99-'00 / '98 W/LETTER)**

70233300	PED.-WELDMENT 500 NON,P,HRC '99-'00
70233400	PED.-WELDMENT 500CI '99-'00
70204200	RAM RAILS NON CHR

**FRAME**

70155200	BUMPER FEET
----------	-------------

**LUBRICATION**

70348900	LUBE STICK
70349000	SILICONE PACKET (1 APPLICATION)

70204200	RAM RAILS NON CHR
----------	-------------------

**FRAME**

70155200	BUMPER FEET
----------	-------------

**LUBRICATION**

70348900	LUBE STICK
70349000	SILICONE PACKET (1 APPLICATION)

# 500Z & ZT, P, HRC PARTS LIST

<u>CONTROL PANEL</u>	<u>PART #</u>	<u>DESCRIPTION</u>
<u>(500ZT's) Overlay Only</u>	70327510	500ZT NON/P Overlay Only
<u>Z also</u>	70327511	500ZT HRC Overlay Only
 <u>(500ZT'S) BOARDS</u>	70328016	500ZT NON CONTROL BOARD ONLY
<u>ONLY</u>	70328015	500ZT P CONTROL BOARD ONLY
	70328014	500ZT HRC CONTROL BOARD ONLY
 <u>(500ZT EX'S) BOARDS</u>	70328056	500ZTEX NON CONTROL BOARD ONLY
<u>ONLY International</u>	70328055	500ZTP EX CONTROL BOARD ONLY
	70328054	500ZTHRC EX CONTROL BOARD ONLY
 <u>SAME PANELS</u>	70328100	500Z,ZT NON PANEL
<u>AS NEW 500ZT</u>	70328101	500Z,ZT P PANEL
<u>SERIES.</u>	70328200	500Z,ZT HRC PANEL
	70290601	PANEL, BOTTOM CONSOLE
	70294301	PANEL LF.LWR. GRIP CLOSURE
	70290801	PANEL RT.LWR. GRIP CLOSURE
	70290701	HANDLE LT. CONSOLE
	70290801	HANDLE RT. CONSOLE
	70331000	MAGNET SAFETY KEY
 <u>PWM</u>		
	70132500	PWM - MOTOR CONTROLLER
 <u>500 ZT SERIES</u>	70342900	7/21/2003 PWM - MOTOR CONTROLLER
<u>SPEED SENSOR</u>		
	70243200	CIRCUIT BOARD SPEED SENSOR
	70243300	SPEED SENSOR SCREW
 <u>DATA CABLE</u>		
	70337900	500Z NON DATA CABLE ,P
	70337800	500Z HRC DATA CABLE
 <u>500 ZT SERIES</u>	70341300	20 PIN DATA CABLE
 <u>DRIVE MOTOR</u>		
	70325500	3HP DRIVE MOTOR
	70341500	500ZT DRIVE MOTOR
 <u>DRV BELT</u>		
	70006300	DRIVE BELT 210J10

**ELEVATION MTR**

70113200	ELEVATION MOTOR
70183200	ELEVATION START CAPACITOR
70115500	3/8X1 CLEVIS PIN
70116700	COTTER PIN
70013500	10-32 X 3/8 PPH SCREW
70118900	TORQUE ARM SWIVEL PIN

**LLS**

70121000	LLS
70120500	LLS wire assy. To PWM

**ELEVATION RACK**

70281002	ELEVATION RISER ASSY.
70154600	ELEVATION BLOCK ASSY.

**POWER CORD**

70253100	9FT. POWER CORD      ER CORD
----------	------------------------------

**ON / OFF SWITCH**

70251100	ROCKER ON/OFF SWITCH
----------	----------------------

**CIRCUIT BREAKER**

70017200	15 AMP CIRCUIT BREAKER
----------	------------------------

**TREADBELT**

70159400	22 X 119 3/4 2PLY TREADBELT
(ZT) 70321600	NEW ZT 20"X112 1/4" TREADBELT

**DECK**

70157900	FLEX DECK
(ZT) 70324300	500ZT FLEX DECK

**FRONT ROLLER**

70255400	ADJ. FRONT ROLLER
70352200	NEW NUMBER FOR ROLLER
70190900	ROLLER SCREW 1/4-20 X 2 GRD5 ZINC

**REAR ROLLER**

70157400	REAR ROLLER
----------	-------------

**STRADDLE COVERS**

70162110	STRADDLE COVER/ALUM. 54 1/2"	
(ZT) 70343700	500ZT STRAD. CVRS. RT.&LT.	<b>Page 49</b>
(ZT) 70334000	500ZT STRAD CVR FRONT CAP Rt (Bullet	It (Bullet
70334100	500ZT STRAD CVR FRONT CAP LT (Bullet	RT(bullet)

70030900	DBL SIDE STICK TAPE 3/8 X 1/16 X 108FT
70243400	BLUE TAPE-STR. CVR. 1/2 X 150FT. ROLL
70086700	6X1 SRADDLE COVER SCREW

**RAMRAILS**

70330800	LEFT RAM RAIL
70330900	RIGHT RAM RAIL

**PEDESTAL**

70325000	PEDESTAL- WELDMENT/ROUNDED
----------	----------------------------

(ZT)

70336900	500ZT PEDESTAL WELMENT
70304200	pedestal screw for zt
70156900	RUBBER WEAR STRIP FOR BASE-PED.

**FRAME**

70262401	FRAME WELDMENT/RND. ADJ. ROLLER
----------	---------------------------------

(ZT)

70322800	500ZT FRAME WLD/RND. ADJ. FR. ROLL
70155200	BUMPER FEET

**LUBRICATION**

70348900	LUBE STICK
70349000	SILICONE PACKET (1 APPLICATION)

# 540P, HRC, CI (NON Z) PARTS LIST

## CONTROL PANEL

### PART #

### DESCRIPTION

70237419	540 <b>NON</b> CONTROL BOARD
70237421	540 <b>P</b> CONTROL BOARD
70237420	540 <b>HRC</b> CONTROL BOARD
70237614	540 <b>CI</b> CONTROL BOARD

70290110	540non overlay
70289310	540p overlay
70289410	540hrc overlay
70290310	540ci overlay

70177400	SAFETY KEY ASSY.
70150000	SAFETY SWITCH

## PWM

70132500	MOTOR CONTROLLER (PWM)
70013500	SCREW, 10-32x3/8 PPH TFS Bo

## SPEED SENSOR

70243200	SPEED SENSOR
70243300	SCREW 4-40x1/4 PPH SELF TAPPING

## DATA CABLE

70337900	540NON, P DATA CABLE
70337800	540 HRC DATA CABLE
70337700	540 CI DATA CABLE
70104000	SCREW #10x1/2 PPH

## DRIVE MOTOR

70325500	3HP. DRIVE MOTOR
70125700	SCREW 10-32x1/4 PPH TFS Bo
70155200	BUMPER FEET 1 1/8 x1 1/2
70176000	3/8 Dbl Coated foam tape Tesa -49
70013500	SCREW10-32x1/4 PPH TFS Bo
70125500	5/16-18 NYLOC NUT
70115200	WASHER 3/8 1Dx7/8odx.083F
70125600	5/16-18x2 CARRIAGE BOLT

## DRV BELT

70006300	POLY-V-BELT DRIVE BELT
----------	------------------------

## ELEVATION MTR

70113200	ELEVATION MOTOR
----------	-----------------

70115500	CLEVIS PIN 3/8x1 1/2
70116700	COTTER PIN 1/16 Dia x 1 5/16
70013500	SCREW 10-32 x 3/8 PPH TFSBO
70118900	TORQUE ARM SWIVEL PIN

**LLS**

70121000	LLS
70125700	SCREW - 10-32x 1/4 PPH TFS BO
70120500	LLS WIRE ASSY. To PWM

**ELEVATION RACK**

70281003	ELEV. RISER ASSY.
70154600	ELEV. BLOCK ASSY.
70122800	SOCKET HD. CAP SCREWS 1/4-20x1
70183200	INCLINE START CAPACITOR
70013500	SCREW FOR CAP./10-32x3/8

**POWER CORD**

70253100	POWER CORD 12* 14/3 SJTW BLACK STRT
70125700	SCREW 10-32x1/4 PPH TFS Bo

**ON / OFF SWITCH**

70251100	ROCKER ON/OFF SWITCH
----------	----------------------

**CIRCUIT BREAKER**

70017200	15 AMP CIRCUIT BREAKER
----------	------------------------

**TREADBELT**

70290000	BELT 22x119 3/4 ST E5 2Ply-Lo
70289900	540 ORTHO TREADBELT

**DECK**

70288900	FLEX DECK
70020200	SCREW 10/32 x 1 1/4 PPH "F"
70158600	BELT GUIDE
70019300	SCREW 10x3/4

**FRONT ROLLER**

70275200	ADJ. FRONT ROLLER
70157000	WASHER INTERNAL TOOTH STAR 1/4 id
70185300	NYLOC NUT 1/4-10 2 nc
70190900	HEX BOLT-TAP1/4-20x2 Grd 5/21NC
70256800	FLAT WASHER .50x.26x.09 2n Pltd.

**REAR ROLLER**

70275500	REAR ROLLER ASSY.
70159000	INTERNAL TOOTH WASHER 5/16
70158900	BOLT HEX HEAD TAP, Grd 5-5/16

**STRADDLE COVERS**

70263900	Straddle cover / Plastic
----------	--------------------------

70030900	TAPE, 3/8x1/16x108ft. DBL stick-49
70243400	BLUE TAPE -STR. CVR. 1/2x150ft roll
70086700	6X1 DRYWALL SCREW

**RAMRAILS**

70274105	CHR RAM RAIL
70210600	#10x3/4 PPH TEK Screw-bo
70280600	NON CNR RAILS(RAM)

**PEDESTAL**

70288600	PEDESTAL- WELDMENT/ROUNDED
70156900	RUBBER WEAR STRIPS

**FRAME**

70289700	FRAME WELDMENT/RND. ADJ. FRONT
70155200	BUMPER FEET
70020200	SCREW 10/32x1 1/4
70019300	SCREW 10x3/4 PPHSMBO
70086700	6x1 DRYWALL SCREW

**AUTO WAXER**

70280800	AUTO WAXER
70019300	SCREW 10x3/4 PPHSMS Bo

**LUBRICATION**

70348900	LUBE STICK
70349000	SILICONE PACKET (1 APPLICATION)

# 540Z, ZT, P, HRC, CI PARTS LIST

<u>CONTROL PANEL</u>	<u>PART #</u>	<u>DESCRIPTION</u>
<u>(540Z's) Overlay only</u>	70292410	540Z CI Overlay only
<u>(540ZT's)Overlays only</u>	70327510	540ZT P Overlay Only
	70327511	540ZT HRC Overlay Only
<u>(540ZT'S)BOARDS ONLY</u>	70328013	540ZT P CONTROL BOARD ONLY
	70328012	540ZT HRC CONTROL BOARD ONLY
	70298612	540 Z CI CONTROL BOARD
<u>540ZT EX'S BOARDS ONLY International</u>	70328053	540ZT PEX CONTROL BOARD ONLY
	70328052	540ZT HRCEX CONTROL BOARD ONLY
<u>ALL 540ZT PANEL ARE THE SAME AS THE REG. 540Z</u>	70328102	540Z,ZT P PANEL
	70328201	540Z,ZT HRC PANEL
	70299201	540Z,ZT CI PANEL
	70298900	PANEL SCREW
	70331000	MAGNET SAFETY KEY
	70290602	Panel Back Cover
<u>OVERLAY</u>		
<u>PWM</u>		
	70132500	PWM MOTOR CONTROLLER
<u>540 ZT SERIES</u>	70342900	540 ZT MOTOR CONTROLLER
	70013500	PWM SCREW
<u>SPEED SENSOR</u>		
	70243200	CIRCUIT BOARD SPEED SENSOR
	70243300	SPEED SENSOR SCREW
<u>DATA CABLE</u>		
<u>ALSO FOR 540ZT</u>	70341300	540ZT 20 pin Data Cable (Most ZT's)
	70337900	540Z,ZT P DATA CABLE
	70337800	540Z,ZT HRC DATA CABLE 6pin & 8pin
	70337700	540Z,ZT CI DATA CABLE 2 pin & 8 pin
<u>DRIVE MOTOR</u>		
	70325500	3HP. DRIVE MOTOR
	70341500	540ZT DRIVE MOTOR
	70125700	Screw 10-32x1/4 PPH TFS Bo
	70155200	BUMPER FEET 1 1/18 X 1 1/2
	70176000	3/8 DBL. COATED FOAM TAPE



	70013500	Screw 10-32x1/4 PPH TFS Bo
	70125500	5/16-18 NYLOC NUT
	70115200	WASHER 3/8 ID X 7/8 OD
	70125600	5/16-18X2 CARRIAGE BOLT
<b><u>DRV BELT</u></b>		
	70006300	210J10 DRIVE BELT
<b><u>ELEVATION MTR</u></b>		
	70113200	ELEVATION MOTOR
	70115500	3/8 X 1 1/2 CLEVIS PIN
	70116700	COTTER PIN
	70013500	Screw 10-32 x 3/8 PPH TFSBO
	70118900	TORQUE ARM SWIVEL PIN
<b><u>LLS</u></b>		
	70121000	LLS
	70120500	LOWER LIMIT SWITCH WIRE
<b><u>ELEVATION RACK</u></b>		
<b><u>(ZT)</u></b>	70281003	540ZT ELEVATION RISER ASSY.
	70154600	ELEVATION BLOCK ASSY.
<b><u>POWER CORD</u></b>		
	70253100	POWER CORD 9FT.
<b><u>ON / OFF SWITCH</u></b>		
	70251100	ROCKER ON/OFF SWITCH
<b><u>CIRCUIT BREAKER</u></b>		
	70017200	15 AMP CIRCUIT BREAKER
<b><u>TREADBELT</u></b>		
	70290000	540Z TREADBELT-22 X 108 3/4
	70289900	540Z TREADBELT-22 X 108 3/4 Ortho
<b><u>(ZT)</u></b>	70321800	540ZT-22"X112 1/4" TREADBELT
zt	70321900	540ZT ORTHO BELT
<b><u>DECK</u></b>		
	70288900	540Z FLEX DECK
<b><u>(ZT)</u></b>	70324400	540ZT FLEX DECK
<b><u>FRONT ROLLER</u></b>		
	70275200	ADJ. FRONT ROLLER
	70352400	NEW NUMBER ADJ. FRONT ROLLER

**REAR ROLLER**

70275500 REAR ROLLER

**STRADDLE COVERS**

70263900 STRADDLE COVER/ALUM. 54 1/2" 55

**(ZT)**

70343700 540ZT PLASTIC STRAD. CVRS.  
70327002 Plastic Insert  
70343901 540ZT Alum Side Covers  
70030900 3/8X1/16X108FT ROLL DBL. SIDE STICK T

70243400 BLUE TAPE - STR. CVR. 1/2X150FT. ROLL  
70329600 SILVER sst tape  
70086700 STRADDLE COVER SCREW

**RAMRAILS**

70330800 LEFT RAM RAIL  
70330900 RIGHT RAM RAIL

**PEDESTAL**

70325100 PEDESTAL-WELDMENT/ROUNDED

**(ZT)**

70337000 540ZT PEDESTAL WELDMENT

**FRAME**

70289701 FRAME WELDMENT/ROUNDED ADJ. RO

**(ZT)**

70322900 540ZT FRAME WELDMENT/RND.

70155200 BUMPER FEET

**LUBRICATION**

70348900 LUBE STICK  
70349000 SILICONE PACKET

# 550P, HRC PARTS LIST

<u>PART #</u>	<u>DESCRIPTION</u>
<b><u>CONTROL PANEL</u></b>	
<b><u>550 Board Only</u></b>	
70237519	550P Board Only
70237518	550HRC Board Only
70237610	550CI Board Only
70279200	550OP/ P DOT/ PANEL
70279100	550HRC DOT/PANEL
70279000	550CI DOT/PANEL
<b><u>OVERLAY</u></b>	
70279201	550OP/ P DOT/OVERLAY
70279101	550HRC DOT/ OVERLAY
70150000	Safety Switch Assembly
70279001	550CI OVERLAY
<b><u>PWM</u></b>	
70132500	MOTOR CONTROLLER
70183500	550ci pwm
<b><u>SPEED SENSOR</u></b>	
70243200	CIRCUIT BOARD SPEED SENSOR
<b><u>DATA CABLE</u></b>	
70337900	550 P INTERFACE CABLE
70337800	550 HRC INTERFACE CABLE
70337700	550 CI INTERFACE CABLE
<b><u>DRV MTR</u></b>	
70325500	3HP DRIVE MOTOR
<b><u>DRV BELT</u></b>	
70006300	210J10 POLY-V-BELT
<b><u>ELEVATION MTR</u></b>	
70113200	ELEVATION MOTOR
<b><u>LLS</u></b>	
70121000	LOWER LIMIT SWITCH
<b><u>ELEVATION RACK</u></b>	
70281003	ELEVATION RISER ASSY.
<b><u>POWER CORD</u></b>	
70253100	9FT. POWER CORD
70008200	STRAIN RELIEF BUSHING
<b><u>ON/OFF SWITCH</u></b>	
70251100	ON/OFF ROCKER SWITCH
<b><u>CIRCUIT BREAKER</u></b>	
70017200	15 AMP CIRCUIT BREAKER
<b><u>TREDBELT</u></b>	
70276800	22X119 3/4" 2PLY TREDBELT
70276900	22x119 3/4" 2PLY TREDBELT ORTHO
<b><u>550CI BELT DECK</u></b>	
70276700	FLEX DECK
<b><u>FRONT ROLLER</u></b>	
70352400	ADJ. FRONT ROLLER
<b><u>REAR ROLLER</u></b>	

70352000 REAR ROLLER

**STRADDLE COVERS**

70162109 LT. AND RT.ALUM. STRADDLE COVER

**PEDESTAL**

70277600 PEDESTAL-WELDMENT/ROUNDED

**FRAME**

70276000 ADJ. FR. ROLLER FRAME/WELDMENT

**LUBRICATION**

70348900 LUBE STICK

70349000 SILICONE PACKET (1 APPLICATION)

# 550Z, P, HRC, CI PARTS LIST

<u>PART #</u>	<u>DESCRIPTION</u>
<b><u>CONTROL PANEL</u></b>	
<b><u>BOARD ONLY</u></b>	
70298217	550Z P <b>BOARD ONLY</b>
<b><u>550Z ONLY</u></b>	
70298218	550Z HRC <b>BOARD ONLY</b>
70298613	550Z CI <b>BOARD ONLY</b>
70292415	550Z P <b>OVERLAY</b>
70334400	550Z P PANEL
70334500	550Z HRC PANEL
70329900	550Z CI PANEL
70331000	MAGNET SAFETY KEY
<b><u>PWM</u></b>	
70132500	PWM MOTOR CONTROLLER
70013500	PWM SCREW
<b><u>SPEED SENSOR</u></b>	
70243200	CIRCUIT BOARD SPEED SENSOR
70243300	SPEED SENSOR SCREW
<b><u>DATA CABLE</u></b>	
70337900	550Z P DATA CABLE
70337800	550Z HRC DATA CABLE
70337700	550Z CI DATA CABLE
<b><u>DRIVE MOTOR</u></b>	
70325500	3HP DRIVE MOTOR
<b><u>DRV BELT</u></b>	
70006300	210J10 DRIVE BELT
<b><u>ELEVATION MTR</u></b>	
70113200	ELEVATION MOTOR
70183200	ELEV. MTR. START CAPACITOR
70115500	3/8 X 1 1/2 CLEVIS PIN
70116700	1/16 DIA X 1 5/16 COTTER PIN
70013500	Screw 10-32 x 3/8 PPH TFSBO
70118900	TORQUE ARM SWIVEL PIN
<b><u>LLS</u></b>	
70121000	LLS
70120500	LOWER LIMIT SWITCH WIRE
<b><u>ELEVATION RACK</u></b>	
70281003	ELEVATION RISER ASSY.
70154600	ELEVATION BLOCK ASSY.

**POWER CORD**

70253100 POWER CORD 9FT.

**ON / OFF SWITCH**

70251100 ROCKER ON/OFF SWITCH

**CIRCUIT BREAKER**

70017200 15 AMP CIRCUIT BREAKER

**TREADBELT**70276800 22X119 3/4 2PLY TREADBELT  
70276900 Belt Seig 22x119 3/4 550 Ortho**DECK**

70276700 FLEX DECK

**FRONT ROLLER**

70352400 ADJ. FRONT ROLLER

**REAR ROLLER**

70352000 REAR ROLLER

**STRADDLE COVERS**70162110 STRADDLE CVR/ALUM 54 1/2"  
70030900 3/8X1/16X108FT. DBL. STICK TAPE  
70243400 1/2X150FT ROLL BLUE TAPE  
70086700 6X1 STRADDLE COVER SCREW**RAMRAILS**70330800 LEFT RAM RAIL  
70330900 RIGHT RAM RAIL**CARRIAGE ASSY. 550Z CI**70240900 ADJ. MOTOR ASSY 550Z CI  
70241100 COVER PAN-WELDMENT  
70239200 SHAFT  
70250700 LIMIT SWITCH ASSY.-STOP 550CI  
70249900 S.O.F.T. SELECT POWER CABLE  
70280000 INTERFACE CABLE-ASSY.550Z CI  
70280400 ADJ. CARRIAGE ASSY. 550Z CI  
70252300 CIRCUIT BOARD INTERFACE 550Z CI**PEDESTAL**70325104 PED-WELDMENT/ROUNDED HRC  
70325105 PED-WELDMENT/ROUNDED P**FRAME**70276000 FRAME WELDMENT/RND-ADJ ROLLER  
70155200 BUMPER FEET**LUBRICATION**70348900 LUBE STICK  
70349000 SILICONE PACKET (1 APPLICATION)

# 550 ZTX, P, HRC, CI PARTS LIST

<u>PART #</u>	<u>DESCRIPTION</u>
<b><u>CONTROL PANEL</u></b>	
<b><u>(550ZTX's) Overlay only</u></b>	
70292415	550ZTX P Overlay only
70292413	550ZTX HRC Overlay only
70292414	550ZTX CI Overlay Only
<b><u>Control Board Only</u></b>	
70298216	550ZTX P CONTROL Board Only
70298215	550ZTX HRC CONTROL Board Only
70298611	550ZTX CI CONTROL Board Only
<b><u>International Version</u></b>	
70298256	550ZTX PEX CONTROL Board Only
70298255	550ZTX HRCEX CONTROL Board Only
70298651	550ZTX CIEX CONTROL Board Only
<b><u>Panel Assy.</u></b>	
70299007	550ZTX P CONTROL PANEL
70298707	550ZTX HRC CONTROL PANEL
70329900	550ZTX CI CONTROL PANEL
<b><u>PWM</u></b>	
70342900	MOTOR CONTROLLER
<b><u>Speed Sensor</u></b>	
70243200	Speed Sensor
<b><u>DATA CABLE</u></b>	
<b><u>500zt</u></b>	
70341300	DATA CABLE HRC
<b><u>DRV MTR</u></b>	
70341500	3HP 10 MPH DRIVE MOTOR
70293002	MOTOR COVER
<b><u>DRV BELT</u></b>	
70006300	210J10 POLY-V-BELT
<b><u>ELEVATION MTR</u></b>	
70330100	INCLINE MOTOR ASSY
<b><u>LLS</u></b>	
70309401	LOWER LIMIT SWITCH
70120501	LOWER LIMIT SWITCH WIRE TO PWM
<b><u>ELEVATION RACK</u></b>	
70329300	INCLINE RACK ASSY
<b><u>POWER CORD</u></b>	
70253100	9FT POWER CORD
70008200	STRAIN RELIEF BUSHING
<b><u>CIRCUIT BREAKER</u></b>	
70017200	15 AMP CIRCUIT BREAKER

**TREADBELT**

70322000	22"X124" TREADBELT
70322100	ORTHO BELT FOR THE 550ZTX CI AND O

**DECK**

70324500	FLEX DECK
70232700	Bumper

**FRONT ROLLER**

70352400	ADJ. FRONT ROLLER
----------	-------------------

**REAR ROLLER**

70352000	REAR ROLLER
----------	-------------

**STRADDLE COVERS**

70343800	ALUM. STRADDLE COVER RH & LH
----------	------------------------------

**RAMRAILS**

70330800	LH RAM RAIL
70330900	RH RAM RAIL
70347500	INTERCHANGABLE RAM RAILS RT.&LT.

**PEDESTAL**

70325302	PEDESTAL WELDMENT - ARCHED 550ztx hrc
----------	---------------------------------------

**FRAME**

70337100	FRAME WELDMENT
----------	----------------

**LUBRICATION**

70348900	LUBE STICK
70349000	SILICONE PACKET (1 APPLICATION)



# **Model 600-750**

# **Parts List**

- **600, P, HRC** **Page 64**
- **600Z / 700Z, P, HRC** **Page 67**
- **700, P, HRC (SS100-SS90)** **Page 70**
- **700A, P, HRC** **Page 73**
- **725 P, HRC** **Page 76**
- **750, P, HRC, CI** **Page 79**

# 600P, HRC PARTS LIST

<u>CONTROL PANEL</u>	<u>PART #</u>	<u>DESCRIPTION</u>
<u>(600) Board Only</u>	70237412	600NON Board Only
	70237411	600P Board Only
	70237410	600HRC Board Only
	70269900	600NON DOT PANEL 00-PRESENT
	70269901	600P DOT PANEL 00-PRESENT
	70150000	SAFETY SWITCH ASSY.
	70182800	SAFETY KEY ASSY.
 <u>OVERLAY</u>		
	70269910	600NON DOT OVERLAY 00-PRESENT
	70269911	600P DOT OVERLAY 00-PRESENT
	70265011	600HRC DOT OVERLAY 00-PRESENT
 <u>PWM</u>		
	70219200	MOTOR CONTROLLER SS-92 DCI
	70219201	MOTOR CONTROLLER 02-PRESENT
	70013500	PWM SCREW
 <u>SPEED SENSOR</u>		
	70243200	CIRCUIT BOARD SPEED SENSOR
	70243300	SPEED SENSOR SCREW
 <u>DATA CABLE</u>		
	70337900	NON HRC DATA CABLE
	70337800	P DATA CABLE
 <u>DRV MTR</u>		
	70325500	3HP DRIVE MOTOR
	70282700	MOTOR CHOKE ASSY.
	70125500	NYLOCK NUT- 5/16-18 DRIVE MTR.
	70125600	CARRIAGE BOLT -5/16-18 X 2 3/4
 <u>DRV BELT</u>		
	70006300	210J10 POLY-V-BELT
 <u>ELEVATION MTR</u>		
	70113200	ELEVATION MOTOR
	70115500	CLEVIS PIN 3/8 X 1 1/2
	70118900	TORQUE ARM SWIVEL PIN
	70116700	COTTER PIN 1/16 DIA. X1 5/16
	70183200	ELEVATION START CAPACITOR
	70013500	CAPACITOR SCREW 10-32 3/8 PPH
 <u>LLS</u>		
	70121000	LOWER LIMIT SWITCH

70125700 10-32 X 1/4 PPH SCREW  
70120500 LOWER LIMIT SWITCH WIRE TO PWM

**ELEVATION RACK**

70281002 ELEVATION RISER ASSY.  
70154600 ELEVATION BLOCK ASSY.  
70122800 1/4-20 X 1 SOCKET HD. CAP SCREW

**POWER CORD**

70282900 12 FT. POWER CORD  
70303700 NEMA PLUG

**ON / OFF SWITCH**

70251100 ROCKER ON/OFF SWITCH

**CIRCUIT BREAKER**

70017200 15 AMP CIRCUIT BREAKER

**TREADBELT**

70159400 20" X 108" 2 PLY SEIGLING TREADBELT

**DECK**

70157900 FLEX DECK  
70020200 DECK SCREW 10/32 X 1 1/4

**BUMPER KIT**

70155200 BUMPER FEET  
70020200 10/32 X 1 1/4 PPH SCREW  
70232700 FLEX BUMPER  
70086700 BUMPER SCREW 6 X 1

**FRONT ROLLER**

**(ADJUSTABLE)**

70255400 ADJ. FRONT ROLLER  
70188500 BOLT - ADJ. FR.  
70185300 NYLOCK NUT - ADJ. FR.  
70256800 FLAT WASHER  
70190900 BOLT - FR. SOLID MOUNT END / ADJ. FR

**REAR ROLLER**

70157400 REAR ROLLER  
70158900 REAR ROLLER BOLT  
70159000 INTERNAL TOOTH WASHER 5/16

**STRADDLE COVERS**

70162101 STRADDLE COVERS RT. & LT. ALUM.  
70086700 6 X 1 DRYWALL SCREW  
70030900 DBL. STICK TAPE 3/8 X 1/16 X 108FT.  
70243400 BLUE TAPE 1/2 X 150FT.

**RAMRAILS**

70274101 HANDLEBAR ASSY./ RAM - CHR  
70210600 #10 X 3/4 PPH TEK SCREW

**REHAB RAILS**

70274401 REHAB HANDRAIL ASSY. - CHR

**REHAB HARDWARE**70157000 WASHER - INTERNAL STAR  
70013500 SCREW 10-32 X 38 PPH  
70104000 SCREW # 10 X 1/2 PPH TEK  
70122800 SCREW 1/4-20 X 1 SOCKET HEAD CAP  
70064500 PLASTIC PLUG**PEDESTAL**70264600 WELDED PEDESTAL 600 NON-CI  
70155900 SCREW PED / 1/4-20 X 5/8  
70157000 INTERNAL TOOTH STAR WASHER / PED  
70269800 BOTTLE HOLDER / MOLDED PLASTIC  
70019300 SCREW - BOTTLE HOLDER**FRAME**

70262401 FRAME WELDMENT/ROUNDED ADJ. RO

**AUTO WAXER**70280800 600 AUTO WAXER ASSY.  
70019300 10 X 3/4 PPHSMS SCREW  
70239800 REPLACEMENT WAX CHANNEL ASSY.**LUBRICATION**70348900 LUBE STICK  
70349000 SILICONE PACKET (1 APPLICATION)

# 600Z/ 700Z, P, HRC PARTS LIST

<u>PART #</u>	<u>DESCRIPTION</u>
<b><u>CONTROL PANEL</u></b>	
<b><u>(600Z's) Overlays only</u></b>	
70327510	600Z NON/P Overlay Only
70327511	600Z HRCEX OVERLAY
<b><u>Board Only 600Z</u></b>	
70328011	600Z NON Control Board Only
70328010	600Z P
<b><u>International</u></b>	
70328051	600Z HRCEX Control Board Only
<b><u>(700Z's) Overlays only</u></b>	
70292412	700Z Overlay only
70292411	700Z P Overlay only
70292413	700Z HRC Overlay only
<b><u>Board Only 700Z</u></b>	
70298412	700Z NON Control Board Only
70298214	700Z P Control Board Only
70298213	700Z HRC Control Board Only
<b><u>International</u></b>	
70298452	700Z NONEX Control Board Only
70298254	700Z PEX Control Board Only
70298253	700Z HRCEX Control Board Only
70290601	PANEL,BOTTOM CONSOLE
70294301	PANEL LF. HANDLEGRIP LOWER
70294302	PANEL RT. HANDLEGRIP LOWER
<b><u>PWM</u></b>	
70343000	220 VOLT PWM
70342900	MOTOR CONTROLLER
<b><u>SPEED SENSOR</u></b>	
70243200	CIRCUIT BOARD SPEED SENSOR
<b><u>DATA CABLE</u></b>	
70341300	20 PIN DATA CABLE
<b><u>DRV MTR</u></b>	
70260800	220 MOTOR
70341500	3HP 115V DRIVE MOTOR
<b><u>DRV BELT</u></b>	
70006300	210J10 POLY-V-BELT
<b><u>ELEVATION MTR</u></b>	
70260800	220 ELEVATION MOTOR
70113200	ELEVATION MOTOR

**LLS**

70121000 LOWER LIMIT SWITCH

**ELEVATION RACK**

70281002 600Z ELEVATION RISER ASSY.

70281003 700Z ELEVATION RISER ASSY.

**POWER CORD**

70303700 12' POWER CORD

**ON / OFF SWITCH**

70251100 ON/OFF ROCKER SWITCH

**CIRCUIT BREAKER**

70017200 15 AMP CIRCUIT BREAKER

**TREADBELT**

70317300 600Z 20"X108" TREADBELT

70317400 700Z 22"X119 3/4" TREADBELT

**DECK**

70157900 600Z FLEX DECK

70276700 700Z FLEX DECK

**FRONT ROLLER**

70352200 600Z ADJ. FRONT ROLLER

70352400 700Z ADJ. FRONT ROLLER

**REAR ROLLER**

70351800 600Z REAR ROLLER

70352000 700Z REAR ROLLER

**STRADDLE COVERS**

70162111 600Z ALUM.STRADDLE CVRS.

70162110 700Z ALUM. STRADDLE COVERS

**RAMRAILS**

70330800 LH RAM RAILS

70330900 RH RAM RAILS

**PEDESTAL**

70325100 PEDESTAL WELDMENT

**FRAME**

70262405 600Z WLD/RND ADJ. ROLLER FRAME

70276003 700Z FRAME W/ ADJ. FR. ROLLER

**AUTO WAXER**

70280800 AUTOWAXER

**LUBRICATION**

70348900 LUBE STICK

70349000 SILICONE PACKET (1 APPLICATION)

**Replacement Pedestal** 70325103!

# 700P, HRC (SS100-SS90) PARTS LIST

	<u>PART #</u>	<u>DESCRIPTION</u>
<b><u>CONTROL PANEL</u></b>		
<b><u>(SS100)</u></b>	70119300	700NON SS100 PANEL 95-96
	70119900	700P SS100 PANEL 95-96
	70179700	700HRC SS100 PANEL 95-95
<b><u>(97-98 STYLE)</u></b>	70132412	700NON SS90 Control Board Only <b>97-98</b>
<b><u>Board Only</u></b>	70132411	700P SS90 Control Board Only <b>97-98</b>
	70132410	700HRC SS90 Control Board Only <b>97-98</b>
<b><u>(99-PRESENT)</u></b>	70237515	700 <b>NON</b> 15% DOT Control Board Only 99-Z
<b><u>(DOT Control Board)</u></b>	70237514	700 <b>P</b> 15% DOT Control Board Only 99-Z
	70237513	700 <b>HRC</b> 15% DOT Control Board Only 99-Z
	70185400	HEART RATE RECEIVER
	70138500	POLAR CHEST STRAP-HEART RATE
	70273800	CONTACT H R TRANSMITTER
	70182800	SAFETY SWITCH ASSY. 700
	70209700	PUSH BUTTON SAFETY SWITCH SS90 TON SAFETY SWITCH SS90
<b><u>OVERLAY</u></b>		
<b><u>(SS100 STYLE)</u></b>	70119301	700NON SS100 OVERLAY 95-96
	70119901	700P SS100 OVERLAY 95-96
	70179701	700HRC SS100 OVERLAY 95-96
<b><u>(97-98 STYLE)</u></b>	70160815	700NON SS90 OVERLAY <b>97-98</b>
	70160816	700P SS90 OVERLAY <b>97-98</b>
	70160814	700HRC SS90 OVERLAY <b>97-98</b>
<b><u>(99-PRESENT)</u></b>	70242310	700 <b>NON</b> DOT OVERLAY 99-PRESENT
	70242311	700 <b>P</b> DOT OVERLAY 99-PRESENT
	70242312	700 <b>HRC</b> DOT OVERLAY 99-PRESENT
<b><u>PWM</u></b>		
<b><u>(SS100)</u></b>	70113900	(SS100) MOTOR CONTROLLER
<b><u>(96-800000-)</u></b>	70219200	PWM MOTOR CONTROLLER
<b><u>(PRESENT)</u></b>		
<b><u>SPEED SENSOR</u></b>		
<b><u>(SS90 STYLE-98-)</u></b>	70162402	SPEED SENSOR SS90



**(99-PRESENT)**

70243201 SPEED SENSOR 700, P, HRC

**DATA CABLE**

70337900 700, P DATA CABLE  
70337800 700 HRC DATA CABLE

**DRV MTR**

70325600 DRIVE MOTOR 3HP W/FLYWHEEL  
70263500 220V DRIVE MOTOR  
70155300 DRIVE PULLEY 1 11/16" DIA.  
70146500 DRIVE PULLEY 12MPH

**DRV BELT**

70127600 DRIVE BELT 260J10 POLY-V-BELT

**ELEVATION MTR**

**(HARDWARE)**

70171500 ELEVATION MOTOR 115V 700, P, HRC  
70126200 INCLINE BEARING (FLANGED)  
70118900 SWIVEL PIN/TORQUE ARM  
70115500 CLEVIS PIN 3/8 DIA. 1 1/2 IN. LONG  
70116700 HAIR COTTER PIN .062 DIA.  
70022600 SET SCREW, INCLINE, CONE POINT

**LLS**

70121000 LOWER LIMIT SWITCH  
70018100 CHERRY SWITCH  
70120500 LOWER LIMIT SWITCH WIRE

**ELEVATION RACK**

**(BEFORE AUG99)**

70176700 MOLDED WHEEL 3/8 BEF.AUG.99  
70003100 WHEEL BOLT 3/8 BEFORE AUG, 99

**AFTER AUG., 99)**

70176701 MOLDED WHEEL 2 1/4 AFT.AUG, 99  
70174300 WHEEL BOLT 1/2" AFTER AUG., 99

**POWER CORD**

70282900 POWER CORD 12 FT.  
70008200 STRAIN RELIEF BUSHING

**ON / OFF SWITCH**

70251100 ON/OFF SWITCH

**CIRCUIT BREAKER**

70017200 15 AMP CIRCUIT BREAKER

**TREADBELT**

70214300 TREADBELT 700, P, HRC

**DECK**

	70158000	DECK
	70086700	DECK SUSP. BLOCK SCREW6X1
	70020200	DECK SCREWS 10/32X1 1/4"
<b><u>FRONT ROLLER</u></b>		
	70150800	FRONT ROLLER ASSY, 700 W/SS100
	<b>(NON-ADJ.)</b>	70164700 FRONT ROLLER 8 MAGNET/NON ADJ
	<b>(ADJ. NOV.-00)</b>	70265300 FRONT ROLLER ADJ.-NOV.2000
	70005600	ROLLER SCREW 3/8-16X3/4
	70005500	ROLLER BOLT 3/8X16X3 HX HD. BOLT
<b><u>REAR ROLLER</u></b>		
	70186000	REAR ROLLER SS90
	70005600	ROLLER SCREW 3/8-16X3/4
	70005500	ROLLER BOLT 3/8X16X3 HX HD. BOLT
	70073900	OLD STYLE
<b><u>STRADDLE COVERS</u></b>		
	70162107	STRADDLE COVER-ALUM.-46 13/16"
	70030901	3/8 X1/16 X 36YD. DBLE STK TAPE 16'
<b><u>RAMRAILS</u></b>		
	70204200	RAMRAIL HANDLE BAR
	70104000	RAIL SCREWS #10-32X3/8
<b><u>PEDESTAL</u></b>		
	70233500	PEDESTAL-99-00 700,700P,700HRC
	70207800	BOLT - PED 3/8" - 16 X 3/4"
<b><u>AUTO WAXER</u></b>		
	70167000	AUTOWAXER - ASSY
	70239800	WAX CHANNEL (ONLY)
	70342000	GRND. WIRE FOR WAXER
<b><u>LUBRICATION</u></b>		
	70348900	LUBE STICK
	70349000	SILICONE PACKET (1 APPLICATION)

# 700A, P, HRC PARTS LIST

<u>WEIGHT</u>	<u>PART #</u>	<u>DESCRIPTION</u>
	70298413	700A NON Board Only
	70237517	700A P Board Only
	70237516	700A HRC Board Only
	70311700	700A DOT PANEL ASSY.
	70312100	700A P DOT PANEL ASSY.
	70312000	700A HRC DOT PANEL ASSY.
	70240505	EXTRUSION PANEL CLIP28 3/4" LG
	70020300	SCREW 6-32x3/8 PPHMS BLK OX
	70182800	SAFETY SWITCH
	70242313	700A DOT /OVERLAY
	70279201	700A P DOT/OVERLAY
	70279101	700A HRC DOT/OVERLAY
3lbs.	70219200	MOTOR CONTROLLER 5592/DCI (Green)
	70219201	MOTOR CONTROLLER (02)
	70013500	SCREW, 10-32x3/8 PPH TFS Bo
	70282700	CHOKE ASSY.
1lbs.	70243200	SPEED SENSOR
	70243300	SCREW 4-40x1/4 PPH SELF TAPPING
	70337900	NON HRC DATA CABLE
	70337800	AP, HRC
44lbs.	70325500	3HP. DRIVE MOTOR
	70125700	SCREW 10-32x1/4 PPH TFS Bo
	70176000	3/8 DBL. COATED FOAM TAPE TESA -49
	70013500	SCREW 10-32x1/4 PPH TFS Bo
	70125500	5/16-18 NYLOC NUT
	70115200	WASHER 3/8 1Dx7/8odx.083F
	70125600	5/16-18x2 CARRIAGE BOLT

	70006300	DRIVE BELT
10lbs.	70113200	ELEVATION MOTOR
	70183200	INCLINE START CAPACITOR
	70013500	SCREW FOR CAP. /10-32x3/8
	70115500	CLEVIS PIN 3/8x1 1/2
	70116700	COTTER PIN 1/16 Diaz x 1 5/16
	70013500	SCREW 10-32 x 3/8 PPH TFSBO
	70118900	TORQUE ARM SWIVEL PIN
	70121000	LLS
	70125700	SCREW - 10-32x 1/4 PPH TFS BO
	70120500	LLS WIRE ASSY. To PWM
26lbs.	70281003	ELEV. RISER ASSY.
	70122800	SOCKET HD. CAP SCREW 1/4-20x1
	70303700	POWER CORD 12* 14/3 SJTW Black STRT
	70125700	SCREW 10-32x1/4 PPH TFS Bo
	70013500	SCREW 10-32x3/8 PPH TFS Bo
	70251100	ROCKER ON/OFF SWITCH
	70017200	15 AMP CIRCUIT BREAKER
9lbs.	70317400	BELT 22x119 3/4 ST E5 2Ply-Lo
60lbs.	70276700	FLEX DECK
	70020200	SCREW 10/32 x 1 1/4 PPH "F" z1
	70158600	BELT GUIDE
	70019300	SCREW 10x3/4
9lbs.	70275200	ADJ. FRONT ROLLER
	70352400	NEW NUMBER ADJ. FRONT ROLLER
	70157000	INTERNAL TOOTH STAR WASHER 1/4 id
	70185300	NYLOC NUT 1/4-10 2 no
	70256800	FLAT WASHER .50x.26x.09 2n Plod.
13lbs.	70275500	REAR ROLLER ASSY.
	70159000	INTERNAL TOOTH WASHER 5/16

	70158900	BOLT HEX HEAD TAP, Gird 5-5/16
	70162109	STRADDLE COVER/ALUM. 54 1/2" 55
	70031200	TAPE 1/2"x18yd. Adhesive
	70030900	TAPE, 3/8x1/16x108ft. DBL stick-49
	70243400	BLUE TAPE -STR. CVR. 1/2x150ft roll
	70086700	6x1 DRYWALL SCREW
	70274105	CHR RAM RAIL
	70280600	NON CHR RAIL (ram)
	70210600	#10x3/4 PPH TEK Screw-boo
	70277601	PEDESTAL- WELDMNT/ROUNDED
	70156900	RUBBER WEAR STRIPS
	70276003	FRAME WLDMNT.
	70155200	BUMPER FEET
	70020200	SCREW 10/32x1 1/4
	70019300	SCREW 10x3/4 PPHSMBO
	70086700	6X1 DRYWALL SCREW
1lbs.	70280800	AUTO WAXER
	70019300	SCREW 10x3/4 PPHSMS Bo
	70348900	LUBE STICK
	70349000	SILICONE PACKET (1 APPLICATION)

# 725P, HRC PARTS LIST

<u>PART #</u>	<u>DESCRIPTION</u>
<b><u>CONTROL PANEL</u></b>	
<b><u>(98 STYLE)</u></b>	
<b><u>Board Only</u></b>	
70132412	725 NON CONTROL Board Only-SS90 (98)
70132411	725P CONTROL Board Only-SS90 (98)
70132410	725HRC CONTROL Board Only-SS90 (98)
<b><u>(99-00 STYLE)</u></b>	
<b><u>Board Only</u></b>	
70237512	725 NON DOT CONTROL Board Only (99-00)
70237511	725P DOT CONTROL Board Only (99-00)
70237510	725HRC DOT CONTROL Board Only (99-00)
70182800	SAFETY KEY ASSY.
70185400	HEART RATE RECEIVER
70138500	HEART RATE POLAR CHEST STRAP
70239800	HEART RATE TRANSMITTER
70245100	PLASTIC COVER -HR CONTROL
<b><u>OVERLAYS</u></b>	
<b><u>(98 STYLE)</u></b>	
70160815	725 NON OVERLAY-SS90 (98)
70160816	725P OVERLAY-SS90 (98)
70160814	725HRC OVERLAY-SS90 (98)
<b><u>( 99- 00 STYLE)</u></b>	
70242310	725 NON DOT/OVERLAY (99-00)
70242311	725P DOT/OVERLAY (99-00)
70242312	725 HRC DOT/OVERLAY (99-00)
<b><u>PWM</u></b>	
70219200	MOTOR CONTROLLER 5592/DCI(Green)
70219201	MOTOR CONTROLLER WITH CHOKE (02)
70013500	SCREW, 10-32x3/8 PPH TFS Bo
70282700	CHOKE ASSY.
<b><u>SPEED SENSOR</u></b>	
70243201	SPEED SENSOR
70243300	SCREW 4-40x1/4 PPH SELF TAPPING
<b><u>DATA CABLE</u></b>	
70337900	725, P DATA CABLE
70337800	725 HRC DATA CABLE
<b><u>DRV MTR</u></b>	
70325800	MED. MOTOR

70325600	DRIVE MOTOR 3 HP.
70125700	MOTOR SCREW
70125600	CARRIAGE BOLT 5/16-18X2"
70125500	NYLOC NUT-5/16-18
70115200	WASHER-3/8 ID. X 7/8 OD.
70219601	MOTOR ISOLATION KIT (725)

**DRV BELT**

70127600	DRIVE BELT 260J10
----------	-------------------

**ELEVATION MTR**

**(HARDWARE)**

70171500	INCLINE MOTOR (HUBBLE)
70183600	CLEVIS PIN 3/8 X 1 3/4
70118900	SWIVEL PIN - TORQUE ARM
70183200	START CAPACITOR
70013500	CAPACITOR SCREW 10-32X3/8

**LLS**

70121000	LOWER LIMIT SWITCH
70125700	LOWER LIMIT SWITCH SCREW
70120500	LOWER LIMIT TO PWM WIRE

**ELEVATION RACK**

70281002	ELEVATION RACK
70122800	ELEV. SCREW 1/4-20X1 SOCKET HEAD
70116900	LOCK NUT 1/4-20 ZINC/COURSE-THREAD
70176700	MOLDED WHEEL 3/8 <b>BEF. AUG., 99</b>
70003100	MOLDED WHEEL BOLT <b>BEF. AUG., 99</b>
70176701	MOLDED WHEEL 1/2 <b>AFTER AUG., 99</b>
70174300	MOLDED WHEEL BOLT <b>AFTER AUG., 99</b>

**POWER CORD**

70282900	12 FT. POWER CORD
----------	-------------------

**ON / OFF SWITCH**

70251100	ON/OFF SWITCH
----------	---------------

**CIRCUIT BREAKER**

70017200	CIRCUIT BREAKER 15 AMP
70213100	CIRCUIT BREAKER 10 AMP DUAL POLE

**TREADBELT**

70214400	SEIGLING TREADBELT E5X20X129
----------	------------------------------

**DECK**

70159100	FLEX DECK
70020200	DECK AND BUMPER FEET SCREW
70155200	DECK BUMPER FEET

**FRONT ROLLER**

**(BEFORE NOV.00)**

70164700	FRONT ROLLER <b>BEFORE NOV.,00</b>
----------	------------------------------------

<b><u>(AFTER NOV.00)</u></b>	70265300	FRONT ROLLER <b>AFTER NOV.,00-ADJ.</b>
	70207800	ROLLER SCREW 3/8-16X3/4
	70283700	ROLLER BOLT 3/8-16X3 LG.
	70115200	ROLLER WASHER 3/8 IDX7/8 OD
	70253700	3/8 NYLOC NUT
<b><u>REAR ROLLER</u></b>	70186000	REAR ROLLER
	70188600	REAR ROLLER BOLT
<b><u>STRADDLE COVERS</u></b>	70162106	STRADDLE COVER
	70086700	STRADDLE COVER SCREW
	70030900	STRADDLE COVER TAPE-108FT.DBL.STK.
	70243400	STRADDLE COVER BLUE TAPE150 FT.
<b><u>RAMRAILS</u></b>	70274101	RAM RAILS CONTACT HEART RATE
	70210600	RAIL SCREW #10X3/4
<b><u>PEDESTAL</u></b>	70233501	PEDESTAL-WELDED
	70156900	RUBBER WEAR STRIP
	70207800	BOLT - PED. 3/8"-16 X 3/4"
	70269800	BOTTLE HOLDER MOLDED PLASTIC
	70019300	BOTTLE HOLDER SCREW 10X3/4
<b><u>AUTO WAXER</u></b>	70167000	AUTO WAXER
	70019300	SCREW 10x3/4 PPHSMS BO
	70342000	GROUNDING STRAP ASSY.
	70239800	WAX CHANNEL (ONLY)
<b><u>LUBRICATION</u></b>	70348900	LUBE STICK
	70349000	SILICONE PACKET (1 APPLICATION)



# 750P, HRC, CI PARTS LIST

<u>PART #</u>	<u>DESCRIPTION</u>
<u>(99-PRESENT)</u> <u>BOARD ONLY</u>	70237524 750 BOARD ONLY 99-PRESENT 70237525 750P BOARD ONLY 99-PRESENT 70237613 750CI BOARD ONLY 99-PRESENT
<u>GRAY MACHINES ONLY!</u> <u>BOARD ONLY</u>	70219310 750 P Board Only 70176910 750CI Board Only
	70185400 HRC RECEIVER 70245100 PLASTIC HR COVER 70182800 SAFETY KEY/SWITCH
<u>OVERLAY</u> <u>(98 STYLE)</u>	70216212 750NON OVERLAY 1998 70216211 750P OVERLAY 1998 70177011 750CI OVERLAY 1998
<u>(99-PRESENT)</u>	70242510 750NON DOT OVERLAY 99-PRESENT 70242511 750P DOT OVERLAY 99-PRESENT 70242610 750CI DOT OVERLAY 99-PRESENT
<u>PWM</u>	70183500 MOTOR CONTROLLER- <b>BEFORE 08/00</b> 70183502 PWM WITH CHOKE- <b>AFTER-08/00</b> 70264800 MOTOR CONTROLLER- 220V  70013500 10-32X3/8 SCREW (PWM)
<u>SPEED SENSOR</u>	70243201 CIRCUIT BOARD SPEED SENSOR 70243300 4-40 X 1/4 SELF TAPPING SCREW
<u>DATA CABLE</u> <u>Verify config.</u>	70286700 750, P DATA CABLE BEFORE 08/00 70337700 750 CI DATA CABLE
<u>Verify config.</u> <u>Verify config.</u>	70219500 750 non, p data cable '99 70271700 750B & PB DATA CABLE '00
<u>DRV MTR</u>	70172000 3HP DRIVE MOTOR <b>Core charge added</b> 70263400 3HP DRIVE MOTOR EX 220V <b>Core charge added</b> 70169600 DRIVE MOTOR TENSION PLATE 70159000 5/16 STAR WASHER

	70125700	10-32X1/4 SCREW
	70219701	MOTOR ISOLATION KIT (750)
<b><u>DRV BELT</u></b>		
	70127600	260J10 POLY-V-BELT
<b><u>TREDBELT</u></b>		
	70214500	TREDBELT/SIEGLING E5X23X129
<b><u>DECK</u></b>		
	70169400	DECK 32 1/2 X 56
	70020200	DECK SCREW 10 X 1 1/4
	70183400	DECK BUMPER
<b><u>ELEVATION MTR</u></b>		
<b><u>(HARDWARE)</u></b>		
	70171500	HUBBLE ELEVATION MOTOR
	70183200	CAPACITOR-LIFT MOTOR
	70183600	3/8 X 1 3/4 CLEVIS PIN
	70118900	TORQUE ARM SWIVEL PIN
	70013500	10-32 X 3/8 SCREW
	70116700	1/16DIA. X 15/16 COTTER PIN
<b><u>LLS</u></b>		
	70121000	LLS
	70125700	10- 32 X 1/4 Screw for LLS Bracket
	70120500	LLS TO PWM WIRE
<b><u>ELEVATION RACK</u></b>		
	70281004	ELEVATION RISER ASSY.
	70154600	ELEVATION BLOCK ASSY.
	70122800	1/4-20 SOCKET HEAD CAP SCREW
	70173900	MACHINED WHEEL 2 1/4" OD.
	70174300	WHEEL BOLT 1/2" X 1 SHOULDER BOLT
<b><u>POWER CORD</u></b>		
	70282900	12 FT. POWER CORD
	70008200	STRAIN RELIEF BUSHING
<b><u>ON / OFF SWITCH</u></b>		
	70251100	ON/OFF ROCKER SWITCH
<b><u>CIRCUIT BREAKER</u></b>		
	70017200	15 AMP CIRCUIT BREAKER
<b><u>FRONT ROLLER</u></b>		
	70168000	NON ADJ. FRONT ROLLER
	70265400	ADJ. FRONT ROLLER
	70207800	SCREW 3/8-16 X 3/4
<b><u>REAR ROLLER</u></b>		
	70168300	REAR ROLLER
	70170800	1/2- 13 X 4" TAP BOLT

70170900 1/2INTERNAL TOOTH STAR WASHER

**STRADDLE COVERS**

70171800 RT. AND LT. STRADDLE COVER  
70243400 BLUE TAPE, STR CVR 1/2 X 150 FT ROLL  
70086700 6 X 1 DRYWALL SCREW  
70030900 DOUBLE STICK TAPE 3/8 X 1/16 X 108 Ft

**RAMRAILS**

70165100 RAM HANDLE BAR  
70210600 #10 X 3/4 SCREW

**PEDESTAL**

70233601 ROUNDED PEDESTAL WELDMENT  
70156900 RUBBER WEAR STRIP  
70269800 BOTTLE HOLDER  
70019300 BOTTLE HOLDER SCREW 10X3/4

**FRAME**

70227501 FRAME WELDMENT/ROUNDED GRAY  
70155200 BUMPER FEET  
70020200 BUMPER FEET SCREWS  
70164500 BUMPON DECK BUMPER

**AUTO WAXER**

70167000 AUTOWAXER  
70019300 AUTOWAXER SCREW, 10 X 3/4  
70342000 GROUNDING STRAP ASSY.  
WAX CHANNEL

**LUBRICATION**

70348900 LUBE STICK  
70349000 SILICONE PACKET (1 APPLICATION)